

# Anti-RB1 Antibody (R1K62)

## Summary

---

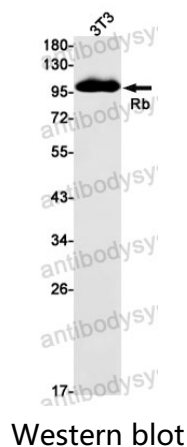
|                              |   |
|------------------------------|---|
| <b>Catalog No.</b>           | RHC19901  |
| <b>Clone ID</b>              | R1K62   |
| <b>Host species</b>          | Rabbit  |
| <b>Tested applications</b>   | WB: 1:500-1:1000  |
| <b>Species reactivity</b>    | Mouse   |
| <b>Form</b>                  | Liquid  |
| <b>Storage buffer</b>        | 0.01M PBS, pH 7.4, 0.05% BSA, 50% Glycerol, 0.05% Sodium azide.   |
| <b>Concentration</b>         | 1 mg/ml   |
| <b>Purity</b>                | >95% by SDS-PAGE.   |
| <b>Clonality</b>             | Monoclonal  |
| <b>Isotype</b>               | IgG   |
| <b>Applications</b>          | WB  |
| <b>Target</b>                | pRb, p110-RB1, Retinoblastoma-associated protein, Rb, p105-Rb, RB1, pp110   |
| <b>Purification</b>          | Protein A/G purified from cell culture supernatant.   |
| <b>Endotoxin level</b>       | Please contact with the lab for this information.   |
| <b>Accession</b>             | P06400  |
| <b>Stability and Storage</b> | Use a manual defrost freezer and avoid repeated freeze thaw cycles. Store at 4 °C for frequent use. Store at -20 °C for twelve months from the date of receipt. |

Note

For research use only.

## Data Image

---



Western blot analysis of Rb in 3T3 lysates using Rb antibody.