

Anti-LCK Antibody (R1K47)

Summary

Catalog No.	RHC19202
Clone ID	R1K47
Host species	Rabbit
Tested applications	IF: 1:50-1:200, IHC: 1:50-1:100, IP: 1:20, WB: 1:500-1:1000
Species reactivity	Human, Rat
Form	Liquid
Storage buffer	0.01M PBS, pH 7.4, 0.05% BSA, 50% Glycerol, 0.05% Sodium azide.
Concentration	1 mg/ml
Purity	>95% by SDS-PAGE.
Clonality	Monoclonal
Isotype	IgG
Applications	IF, IHC, IP, WB
Target	T cell-specific protein-tyrosine kinase, LSK, LCK, Protein YT16, p56-LCK, Tyrosine-protein kinase Lck, Lymphocyte cell-specific protein-tyrosine kinase, Proto-oncogene Lck, Leukocyte C-terminal Src kinase
Purification	Protein A/G purified from cell culture supernatant.
Endotoxin level	Please contact with the lab for this information.
Accession	P06239

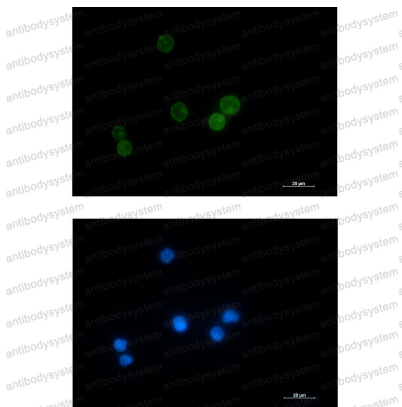
Stability and Storage

Use a manual defrost freezer and avoid repeated freeze thaw cycles. Store at 4 °C for frequent use. Store at -20 °C for twelve months from the date of receipt.

Note

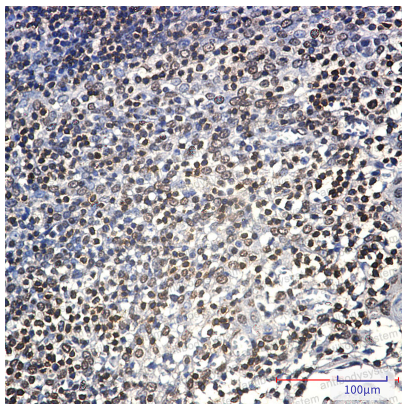
For research use only.

Data Image



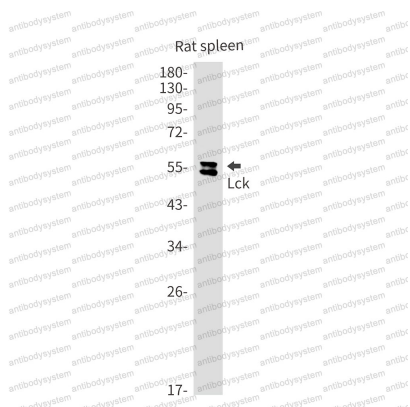
Immunofluorescence

Immunocytochemistry analysis of Lck (green) in Jurkat using Lck antibody, and DAPI (blue).



Immunohistochemical

Immunohistochemistry analysis of paraffin-embedded Human tonsil using Lck antibody. High-pressure and temperature Sodium Citrate pH 6.0 was used for antigen retrieval.



Western blot

Western blot analysis of Lck in rat spleen lysates using Lck antibody.



Western blot

Western blot analysis of Lck in Jurkat lysates using Lck antibody