

Anti-Phospho-KRT8/CK-8 (Ser23) Antibody (R1K43)

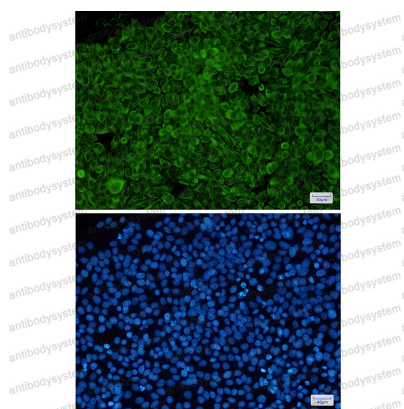
Summary

Catalog No.	RHC17903
Clone ID	R1K43
Host species	Rabbit
Tested applications	IF: 1:50-1:200, IHC: 1:50-1:100, IP: 1:20, WB: 1:500-1:1000
Species reactivity	Human
Form	Liquid
Storage buffer	0.01M PBS, pH 7.4, 0.05% BSA, 50% Glycerol, 0.05% Sodium azide.
Concentration	1 mg/ml
Purity	>95% by SDS-PAGE.
Clonality	Monoclonal
Isotype	IgG
Applications	IF, IHC, IP, WB
Target	Type-II keratin Kb8, CYK8, Keratin-8, KRT8, Keratin, type II cytoskeletal 8, Cytokeratin-8, CK-8, K8
Purification	Protein A/G purified from cell culture supernatant.
Endotoxin level	Please contact with the lab for this information.
Accession	P05787
Stability and Storage	Use a manual defrost freezer and avoid repeated freeze thaw cycles. Store at 4 °C for frequent use. Store at -20 °C for twelve months from the date of receipt.

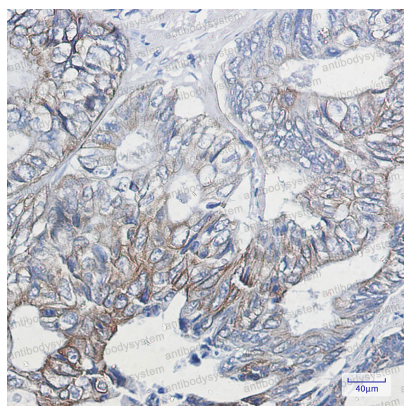
Note

For research use only.

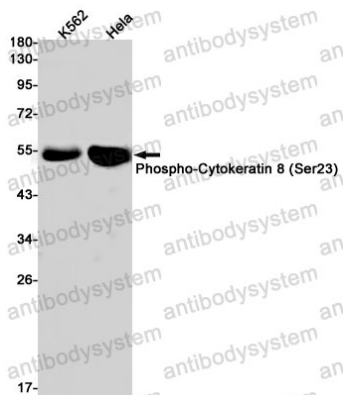
Data Image

**Immunofluorescence**

Immunocytochemistry analysis of Cytokeratin 8 (Phospho-Ser23)(green) in HeLa using Cytokeratin 8 (Phospho-Ser23) antibody, and DAPI(blue)

**Immunohistochemical**

Immunohistochemistry analysis of paraffin-embedded Human colon cancer using Cytokeratin 8 (Phospho-Ser23) antibody. High-pressure and temperature Sodium Citrate pH 6.0 was used for antigen retrieval.



Western blot

Western blot analysis of Phospho-Cytokeratin 8 (Ser23) in K562, HeLa lysates using Phospho-Cytokeratin 8 (Ser23) antibody.