

Anti-ATP5MC1 Antibody (R1K34)

Summary

Catalog No.	RHC17104
Clone ID	R1K34
Host species	Rabbit
Tested applications	IF: 1:50-1:200, WB: 1:500-1:1000
Species reactivity	Human
Form	Liquid
Storage buffer	0.01M PBS, pH 7.4, 0.05% BSA, 50% Glycerol, 0.05% Sodium azide.
Concentration	1 mg/ml
Purity	>95% by SDS-PAGE.
Clonality	Monoclonal
Isotype	IgG
Applications	IF, WB
Target	ATPase subunit c, ATP5G1, ATP synthase proton-transporting mitochondrial F(0) complex subunit C1, ATPase protein 9, ATP synthase F(0) complex subunit C1, mitochondrial, ATP synthase lipid-binding protein, ATP synthase membrane subunit c locus 1, ATP synthase proteolipid P1, ATP5MC1
Purification	Protein A/G purified from cell culture supernatant.
Endotoxin level	Please contact with the lab for this information.
Accession	P05496

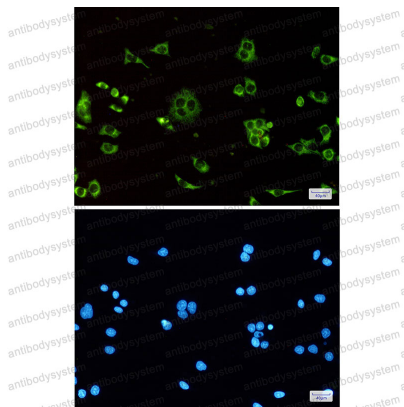
Recombinant Proteins & Antibodies

Stability and Storage

Use a manual defrost freezer and avoid repeated freeze thaw cycles. Store at 4 °C for frequent use. Store at -20 °C for twelve months from the date of receipt.

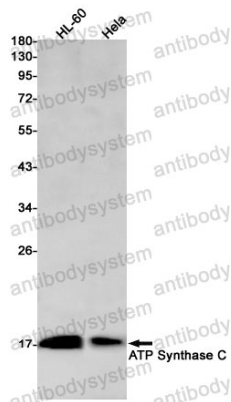
Note

For research use only.

Data Image

Immunofluorescence

Immunocytochemistry analysis of ATP synthase C (green) in HeLa using ATP synthase C antibody, and DAPI (blue)



Western blot

Western blot analysis of ATP Synthase C in HL-60, HeLa lysates using ATP Synthase C antibody.