

Anti-FGF1/aFGF Antibody (R1K22)

Summary

Catalog No.	RHC15701
Clone ID	R1K22
Host species	Rabbit
Tested applications	WB: 1:500-1:1000
Species reactivity	Human, Mouse, Rat
Form	Liquid
Storage buffer	0.01M PBS, pH 7.4, 0.05% BSA, 50% Glycerol, 0.05% Sodium azide.
Concentration	1 mg/ml
Purity	>95% by SDS-PAGE.
Clonality	Monoclonal
Isotype	IgG
Applications	WB
Target	Endothelial cell growth factor, HBGF-1, Fibroblast growth factor 1, FGF1, ECGF, Acidic fibroblast growth factor, aFGF, Heparin-binding growth factor 1, FGF-1, FGFA
Purification	Protein A/G purified from cell culture supernatant.
Endotoxin level	Please contact with the lab for this information.
Accession	P05230

Recombinant Proteins & Antibodies

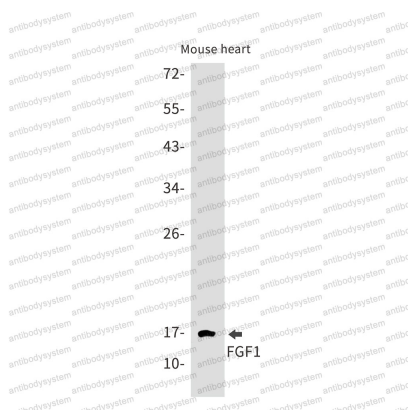
Stability and Storage

Use a manual defrost freezer and avoid repeated freeze thaw cycles. Store at 4 °C for frequent use. Store at -20 °C for twelve months from the date of receipt.

Note

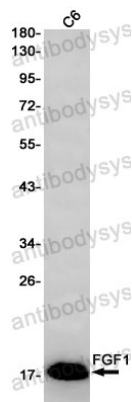
For research use only.

Data Image



Western blot

Western blot analysis of FGF1 in mouse heart lysates using FGF1 antibody.



Western blot

Western blot analysis of FGF1 in C6 lysates using FGF1 antibody.