

# Anti-Phospho-EIF2S1/eIF2A (Ser51) Antibody (R1K19)

## Summary

---

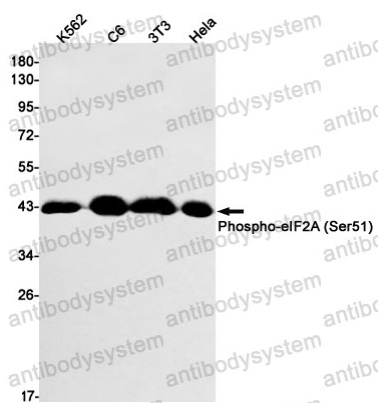
<b>Catalog No.</b>	RHC15502
<b>Clone ID</b>	R1K19
<b>Host species</b>	Rabbit
<b>Tested applications</b>	WB: 1:500-1:1000
<b>Species reactivity</b>	Human, Mouse, Rat
<b>Form</b>	Liquid
<b>Storage buffer</b>	0.01M PBS, pH 7.4, 0.05% BSA, 50% Glycerol, 0.05% Sodium azide.
<b>Concentration</b>	1 mg/ml
<b>Purity</b>	>95% by SDS-PAGE.
<b>Clonality</b>	Monoclonal
<b>Isotype</b>	IgG
<b>Applications</b>	WB
<b>Target</b>	EIF2A, eIF-2A, Eukaryotic translation initiation factor 2 subunit alpha, Eukaryotic translation initiation factor 2 subunit 1, EIF2S1, eIF-2-alpha, eIF-2alpha
<b>Purification</b>	Protein A/G purified from cell culture supernatant.
<b>Endotoxin level</b>	Please contact with the lab for this information.
<b>Accession</b>	P05198

**Stability and Storage**

Use a manual defrost freezer and avoid repeated freeze thaw cycles. Store at 4 °C for frequent use. Store at -20 °C for twelve months from the date of receipt.

**Note**

For research use only.

**Data Image**

Western blot

Western blot analysis of Phospho-eIF2A (Ser51) in K562, C6, 3T3, HeLa lysates using Phospho-eIF2A (Ser51) antibody.