

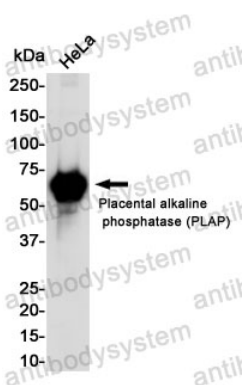
Anti-ALPP/PLAP Antibody (R1K18)

Summary

Catalog No.	RHC15403
Clone ID	R1K18
Host species	Rabbit
Tested applications	WB: 1:500-1:1000
Species reactivity	Human
Form	Liquid
Storage buffer	0.01M PBS, pH 7.4, 0.05% BSA, 50% Glycerol, 0.05% Sodium azide.
Concentration	1 mg/ml
Purity	>95% by SDS-PAGE.
Clonality	Monoclonal
Isotype	IgG
Applications	WB
Target	PLAP-1, ALPP, Placental alkaline phosphatase 1, PLAP, Alkaline phosphatase Regan isozyme, Alkaline phosphatase, placental type
Purification	Protein A/G purified from cell culture supernatant.
Endotoxin level	Please contact with the lab for this information.
Accession	P05187
Stability and Storage	Use a manual defrost freezer and avoid repeated freeze thaw cycles. Store at 4 °C for frequent use. Store at -20 °C for twelve months from the date of receipt.

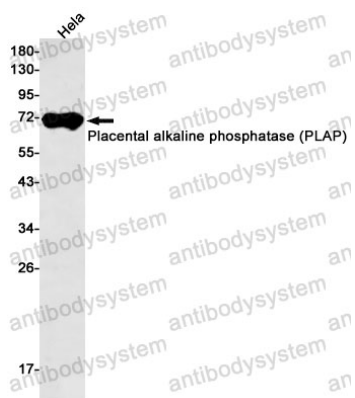
Note

For research use only.

Data Image

Western blot

Western blot analysis of Placental alkaline phosphatase (Phospho- LAP) in HeLa lysates using Placental Alkaline Phosphatase antibody.



Western blot

Western blot analysis of Placental alkaline phosphatase (PLAP) in HeLa lysates using Placental alkaline phosphatase (PLAP) antibody.