

Anti-ALPL Antibody (R1K17)

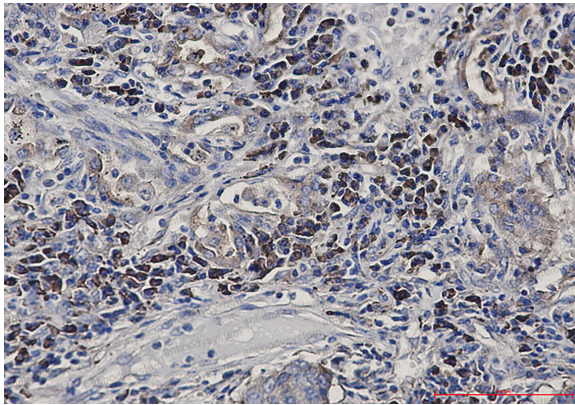
Summary

| | |
|------------------------------|---|
| Catalog No. | RHC15301 |
| Clone ID | R1K17 |
| Host species | Rabbit |
| Tested applications | IF: 1:50-1:200, IHC: 1:50-1:100, IP: 1:20, WB: 1:500-1:1000 |
| Species reactivity | Human, Rat |
| Form | Liquid |
| Storage buffer | 0.01M PBS, pH 7.4, 0.05% BSA, 50% Glycerol, 0.05% Sodium azide. |
| Concentration | 1 mg/ml |
| Purity | >95% by SDS-PAGE. |
| Clonality | Monoclonal |
| Isotype | IgG |
| Applications | IF, IHC, IP, WB |
| Target | Alkaline phosphatase liver/bone/kidney isozyme, AP-TNAP, TNSALP, Alkaline phosphatase, tissue-nonspecific isozyme, ALPL |
| Purification | Protein A/G purified from cell culture supernatant. |
| Endotoxin level | Please contact with the lab for this information. |
| Accession | P05186 |
| Stability and Storage | Use a manual defrost freezer and avoid repeated freeze thaw cycles. Store at 4 °C for frequent use. Store at -20 °C for twelve months from the date of receipt. |

Note

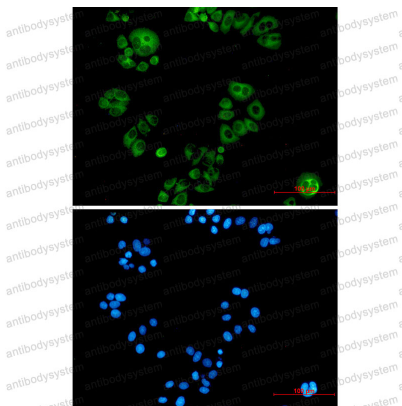
For research use only.

Data Image



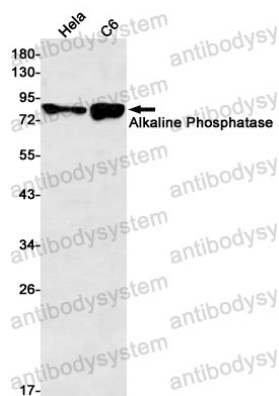
Immunohistochemical

Immunohistochemistry analysis of paraffin-embedded Human lung cancer using Alkaline Phosphatase, NonSpecific antibody. High-pressure and temperature Sodium Citrate pH 6.0 was used for antigen retrieval.



Immunohistochemical

Immunocytochemistry analysis of Alkaline Phosphatase, NonSpecific (green) in HeLa using Alkaline Phosphatase, NonSpecific antibody, and DAPI (blue)



Western blot

Western blot analysis of Alkaline Phosphatase in Hela, C6 lysates using Alkaline Phosphatase antibody.