

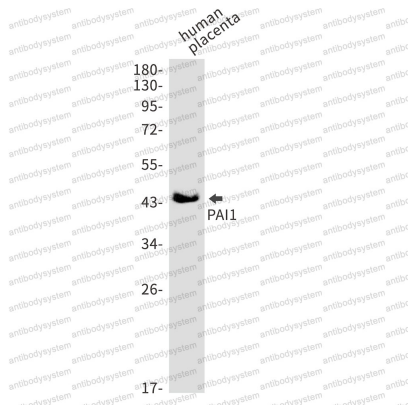
Anti-SERPINE1/PAI-1 Antibody (R1K03)

Summary

Catalog No.	RHC13908
Clone ID	R1K03
Host species	Rabbit
Tested applications	IF: 1:50-1:200, IP: 1:20, WB: 1:500-1:1000
Species reactivity	Human, Mouse, Rat
Form	Liquid
Storage buffer	0.01M PBS, pH 7.4, 0.05% BSA, 50% Glycerol, 0.05% Sodium azide.
Concentration	1 mg/ml
Purity	>95% by SDS-PAGE.
Clonality	Monoclonal
Isotype	IgG
Applications	IF, IP, WB
Target	PLANH1, Endothelial plasminogen activator inhibitor, SERPINE1, Plasminogen activator inhibitor 1, PAI1, PAI, PAI-1, Serpin E1
Purification	Protein A/G purified from cell culture supernatant.
Endotoxin level	Please contact with the lab for this information.
Accession	P05121
Stability and Storage	Use a manual defrost freezer and avoid repeated freeze thaw cycles. Store at 4 °C for frequent use. Store at -20 °C for twelve months from the date of receipt.

Note For research use only.

Data Image



Western blot

Western blot analysis of PAI1 in Human placenta lysates using PAI1 antibody.