

Anti-CYP17A1 Antibody (R1J96)

Summary

Catalog No.	RHC12901
Clone ID	R1J96
Host species	Rabbit
Tested applications	IF: 1:50-1:200, IHC: 1:50-1:100, IP: 1:20, WB: 1:500-1:1000
Species reactivity	Human, Mouse, Rat
Form	Liquid
Storage buffer	0.01M PBS, pH 7.4, 0.05% BSA, 50% Glycerol, 0.05% Sodium azide.
Concentration	1 mg/ml
Purity	>95% by SDS-PAGE.
Clonality	Monoclonal
Isotype	IgG
Applications	IF, IHC, IP, WB
Target	Steroid 17-alpha-hydroxylase/17,20 lyase, CYPXVII, Cytochrome P450 17A1, Cytochrome P450-C17, Steroid 17-alpha-monooxygenase, 17-alpha-hydroxyprogesterone aldolase, CYP17A1, S17AH, Cytochrome P450c17, CYP17
Purification	Protein A/G purified from cell culture supernatant.
Endotoxin level	Please contact with the lab for this information.
Accession	P05093

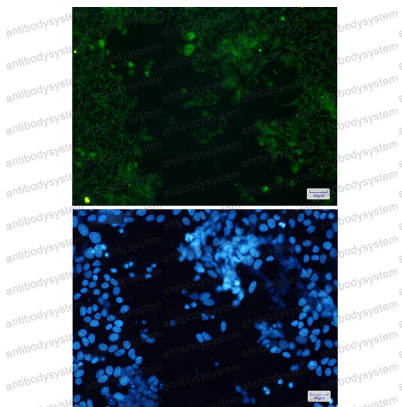
Stability and Storage

Use a manual defrost freezer and avoid repeated freeze thaw cycles. Store at 4 °C for frequent use. Store at -20 °C for twelve months from the date of receipt.

Note

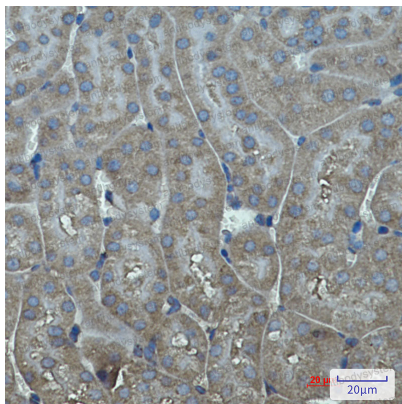
For research use only.

Data Image



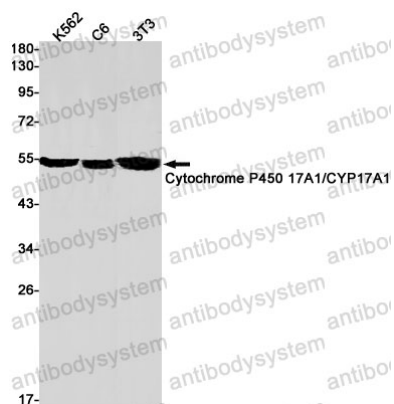
Immunofluorescence

Immunocytochemistry analysis of Cytochrome P450 17A1(green) in HeLa cells using Cytochrome P450 17A1 antibody, and DAPI(blue)



Immunohistochemical

Immunohistochemistry analysis of paraffin-embedded mouse kidney using Cytochrome P450 17A1 antibody. High-pressure and temperature Sodium Citrate pH 6.0 was used for antigen retrieval.



Western blot

Western blot analysis of Cytochrome P450 17A1/CYP17A1 in K562, C6, 3T3 lysates using Cytochrome P450 17A1/CYP17A1 antibody.