

Anti-Phospho-APP (Thr743) Antibody (R1J88)

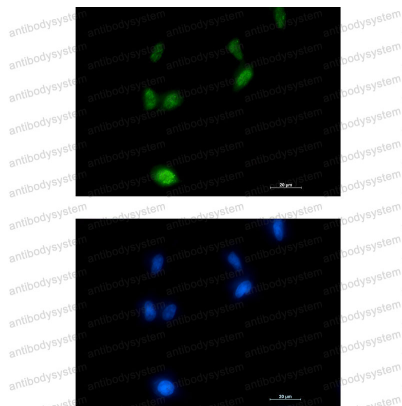
Summary

Catalog No.	RHC12513
Clone ID	R1J88
Host species	Rabbit
Tested applications	IF: 1:50-1:200, IP: 1:20, WB: 1:500-1:1000
Species reactivity	Human, Rat
Form	Liquid
Storage buffer	0.01M PBS, pH 7.4, 0.05% BSA, 50% Glycerol, 0.05% Sodium azide.
Concentration	1 mg/ml
Purity	>95% by SDS-PAGE.
Clonality	Monoclonal
Isotype	IgG
Applications	IF, IP, WB
Target	AICD-57, A4, Beta-CTF, Protease nexin-II, Gamma-CTF(50), ABPP, S-APP-beta, APP, Abeta40, Abeta42, AID(59), Amyloid intracellular domain 59, AID(57), S-APP-alpha, Gamma-CTF(59), Beta-secretase C-terminal fragment, Amyloid-beta precursor protein, Amyloid precursor protein, Beta-APP42, PreA4, Alzheimer disease amyloid protein, APPI, PN-II, AICD-59, Alpha-secretase C-terminal fragment, Amyloid-beta A4 protein, Amyloid intracellular domain 57, CVAP, Amyloid intracellular domain 50, Beta-APP40, AD1, Cerebral vascular amyloid peptide, AID(50), Alpha-CTF, Gamma-CTF(57), AICD-50
Purification	Protein A/G purified from cell culture supernatant.

Recombinant Proteins & Antibodies

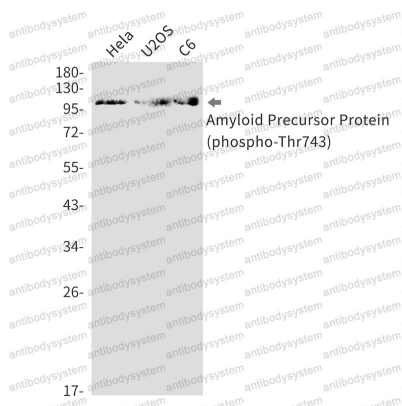
Endotoxin level	Please contact with the lab for this information.
Accession	P05067
Stability and Storage	Use a manual defrost freezer and avoid repeated freeze thaw cycles. Store at 4 °C for frequent use. Store at -20 °C for twelve months from the date of receipt.
Note	For research use only.

Data Image



Immunofluorescence

Immunocytochemistry analysis of Phospho-Amyloid Precursor Protein (Thr743) (green) in LNcap using Phospho-Amyloid Precursor Protein (Thr743) antibody, and DAPI (blue).



Western blot

Western blot analysis of Phospho-Amyloid Precursor Protein (Thr743) in Hela, U2OS, C6 lysates using Phospho-Amyloid Precursor Protein (Thr743) antibody.