

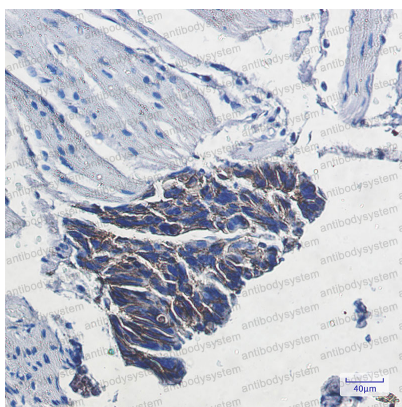
Anti-ATP1B1 Antibody (R1J86)

Summary

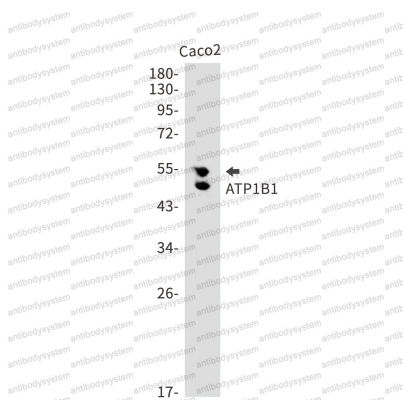
Catalog No.	RHC12201
Clone ID	R1J86
Host species	Rabbit
Tested applications	IHC: 1:50-1:100, WB: 1:500-1:1000
Species reactivity	Human, Rat
Form	Liquid
Storage buffer	0.01M PBS, pH 7.4, 0.05% BSA, 50% Glycerol, 0.05% Sodium azide.
Concentration	1 mg/ml
Purity	>95% by SDS-PAGE.
Clonality	Monoclonal
Isotype	IgG
Applications	IHC, WB
Target	Sodium/potassium-transporting ATPase subunit beta-1, ATP1B1, Sodium/potassium-dependent ATPase subunit beta-1, ATP1B
Purification	Protein A/G purified from cell culture supernatant.
Endotoxin level	Please contact with the lab for this information.
Accession	P05026
Stability and Storage	Use a manual defrost freezer and avoid repeated freeze thaw cycles. Store at 4 °C for frequent use. Store at -20 °C for twelve months from the date of receipt.

Note

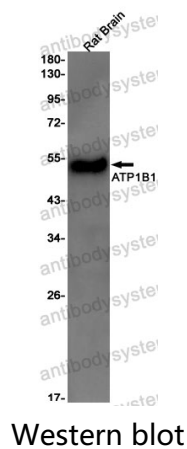
For research use only.

Data Image**Immunohistochemical**

Immunohistochemistry analysis of paraffin-embedded Human colon cancer using ATP1B1 antibody. High-pressure and temperature Sodium Citrate pH 6.0 was used for antigen retrieval.

**Western blot**

Western blot analysis of ATP1B1 in Caco2 lysates using ATP1B1 antibody.



Western blot analysis of ATP1B1 in rat Brain lysates using ATP1B1 antibody.