

# Anti-ATP1B1 Antibody (R1J85)

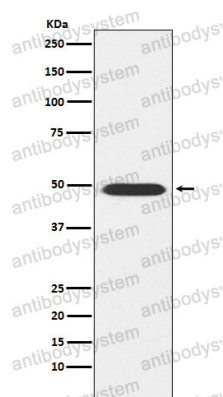
## Summary

---

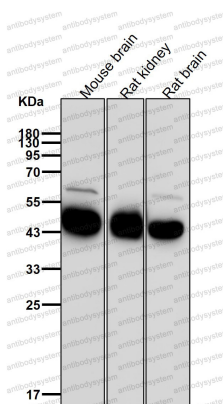
|                              |   |
|------------------------------|---|
| <b>Catalog No.</b>           | RHC12202  |
| <b>Clone ID</b>              | R1J85   |
| <b>Host species</b>          | Rabbit  |
| <b>Tested applications</b>   | IHC: 1:100-1:200, WB: 1:1000-1:2000   |
| <b>Species reactivity</b>    | Human, Mouse, Rat   |
| <b>Form</b>                  | Liquid  |
| <b>Storage buffer</b>        | 0.01M PBS, pH 7.4, 0.05% BSA, 50% Glycerol, 0.05% Sodium azide.   |
| <b>Concentration</b>         | 1 mg/ml   |
| <b>Purity</b>                | >95% by SDS-PAGE.   |
| <b>Clonality</b>             | Monoclonal  |
| <b>Isotype</b>               | IgG   |
| <b>Applications</b>          | IHC, WB   |
| <b>Target</b>                | Sodium/potassium-transporting ATPase subunit beta-1, ATP1B1,<br>Sodium/potassium-dependent ATPase subunit beta-1, ATP1B   |
| <b>Purification</b>          | Protein A/G purified from cell culture supernatant.   |
| <b>Endotoxin level</b>       | Please contact with the lab for this information.   |
| <b>Accession</b>             | P05026  |
| <b>Stability and Storage</b> | Use a manual defrost freezer and avoid repeated freeze thaw cycles. Store at 4 °C for frequent use. Store at -20 °C for twelve months from the date of receipt. |

**Note**

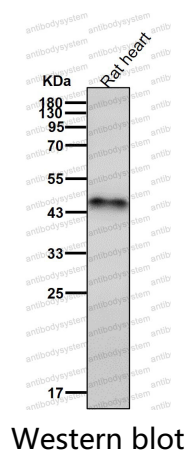
For research use only.

**Data Image****Western blot**

Western blot analysis of ATP1B1 expression in Mouse brain lysate.

**Western blot**

All lanes use the Antibody at 1:2K dilution for 1 hour at room temperature.



All lanes use the Antibody at 1:2K dilution for 1 hour at room temperature.