

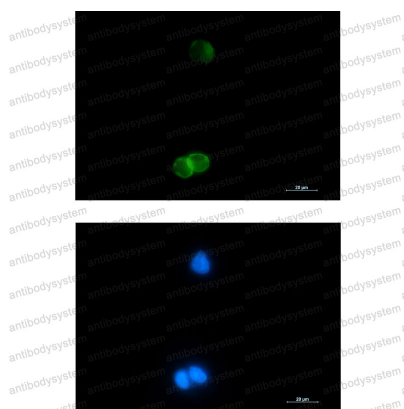
Anti-CD236/GYPC Antibody (R1J84)

Summary

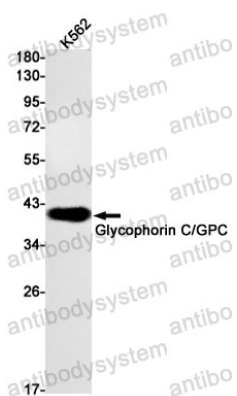
Catalog No.	RHC11501
Clone ID	R1J84
Host species	Rabbit
Tested applications	IF: 1:50-1:200, IP: 1:20, WB: 1:500-1:1000
Species reactivity	Human
Form	Liquid
Storage buffer	0.01M PBS, pH 7.4, 0.05% BSA, 50% Glycerol, 0.05% Sodium azide.
Concentration	1 mg/ml
Purity	>95% by SDS-PAGE.
Clonality	Monoclonal
Isotype	IgG
Applications	IF, IP, WB
Target	Glycoconnectin, GLPC, GYPC, Glycophorin-D, Glycoprotein beta, GPC, GPD, Sialoglycoprotein D, CD236, PAS-2', Glycophorin-C
Purification	Protein A/G purified from cell culture supernatant.
Endotoxin level	Please contact with the lab for this information.
Accession	P04921
Stability and Storage	Use a manual defrost freezer and avoid repeated freeze thaw cycles. Store at 4 °C for frequent use. Store at -20 °C for twelve months from the date of receipt.

Note

For research use only.

Data Image**Immunofluorescence**

Immunocytochemistry analysis of Glycophorin C (green) in K562 using Glycophorin C antibody, and DAPI(blue).

**Western blot**

Western blot analysis of Glycophorin C/GPC in K562 lysates using Glycophorin C/GPC antibody.