

Anti-CD236/GYPC Antibody (R1J83)

Summary

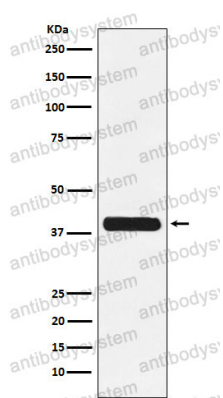
| | |
|----------------------------|---------------------------------------------------------------------------------------------------------------------------|
| Catalog No. | RHC11502 |
| Clone ID | R1J83 |
| Host species | Rabbit |
| Tested applications | FCM: 1:20-1:100, IF: 1:50-1:200, IHC: 1:100-1:200, IP: 1:20-1:50, WB: 1:1000-1:2000 |
| Species reactivity | Human |
| Form | Liquid |
| Storage buffer | 0.01M PBS, pH 7.4, 0.05% BSA, 50% Glycerol, 0.05% Sodium azide. |
| Concentration | 1 mg/ml |
| Purity | >95% by SDS-PAGE. |
| Clonality | Monoclonal |
| Isotype | IgG |
| Applications | FCM, IF, IHC, IP, WB |
| Target | Glycoconnectin, GLPC, GYPC, Glycophorin-D, Glycoprotein beta, GPC, GPD, Sialoglycoprotein D, CD236, PAS-2', Glycophorin-C |
| Purification | Protein A/G purified from cell culture supernatant. |
| Endotoxin level | Please contact with the lab for this information. |
| Accession | P04921 |

Stability and Storage

Use a manual defrost freezer and avoid repeated freeze thaw cycles. Store at 4 °C for frequent use. Store at -20 °C for twelve months from the date of receipt.

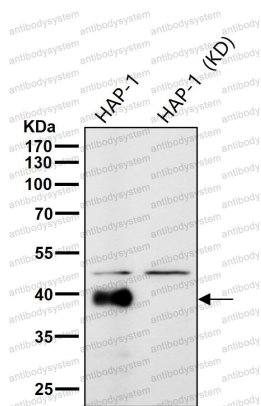
Note

For research use only.

Data Image

Western blot

Western blot analysis of Glycophorin C expression in K562 cell lysate.



Western blot

All lanes use the Antibody at 1:1k dilution for 1 hour at room temperature.