

# Anti-CYBB/NOX2 Antibody (R1J76)

## Summary

---

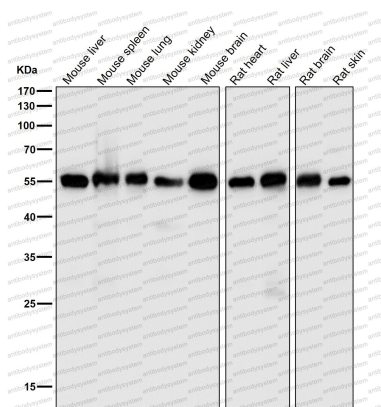
<b>Catalog No.</b>	RHC10901
<b>Clone ID</b>	R1J76
<b>Host species</b>	Rabbit
<b>Tested applications</b>	WB: 1:1000-1:2000
<b>Species reactivity</b>	Human, Mouse, Rat
<b>Form</b>	Liquid
<b>Storage buffer</b>	0.01M PBS, pH 7.4, 0.05% BSA, 50% Glycerol, 0.05% Sodium azide.
<b>Concentration</b>	1 mg/ml
<b>Purity</b>	>95% by SDS-PAGE.
<b>Clonality</b>	Monoclonal
<b>Isotype</b>	IgG
<b>Applications</b>	WB
<b>Target</b>	Cytochrome b558 subunit beta, Cytochrome b(558) subunit beta, Heme-binding membrane glycoprotein gp91phox, Neutrophil cytochrome b 91 kDa polypeptide, gp91-phox, NOX2, Cytochrome b-245 heavy chain, p22 phagocyte B-cytochrome, Superoxide-generating NADPH oxidase heavy chain subunit, gp91-1, NADPH oxidase 2, CYBB, CGD91-phox
<b>Purification</b>	Protein A/G purified from cell culture supernatant.
<b>Endotoxin level</b>	Please contact with the lab for this information.
<b>Accession</b>	P04839

**Stability and Storage**

Use a manual defrost freezer and avoid repeated freeze thaw cycles. Store at 4 °C for frequent use. Store at -20 °C for twelve months from the date of receipt.

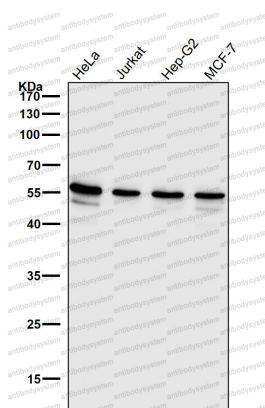
**Note**

For research use only.

**Data Image**

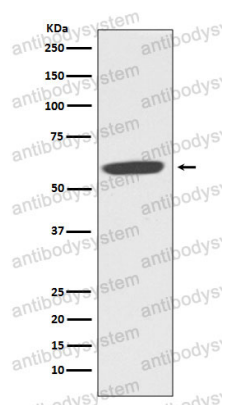
Western blot

All lanes use the Antibody at 1:2K dilution for 1 hour at room temperature.



Western blot

All lanes use the Antibody at 1:1K dilution for 1 hour at room temperature.



Western blot

Western blot analysis of NOX2/CYBB/gp91phox expression in MCF-7 cell lysate.