

Anti-TUBB4A Antibody (R1J64)

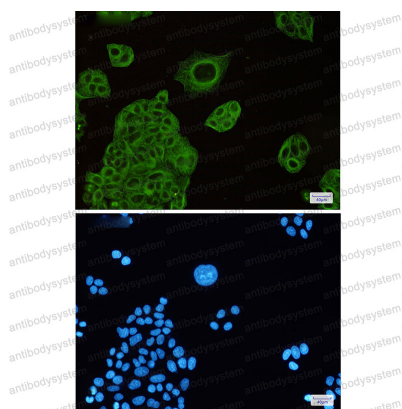
Summary

Catalog No.	RHC08901
Clone ID	R1J64
Host species	Rabbit
Tested applications	IF: 1:50-1:200, IHC: 1:50-1:100, WB: 1:500-1:1000
Species reactivity	Human, Mouse, Rat
Form	Liquid
Storage buffer	0.01M PBS, pH 7.4, 0.05% BSA, 50% Glycerol, 0.05% Sodium azide.
Concentration	1 mg/ml
Purity	>95% by SDS-PAGE.
Clonality	Monoclonal
Isotype	IgG
Applications	IF, IHC, WB
Target	TUBB4, Tubulin beta-4 chain, TUBB5, Tubulin beta-4A chain, Tubulin 5 beta, TUBB4A
Purification	Protein A/G purified from cell culture supernatant.
Endotoxin level	Please contact with the lab for this information.
Accession	P04350
Stability and Storage	Use a manual defrost freezer and avoid repeated freeze thaw cycles. Store at 4 °C for frequent use. Store at -20 °C for twelve months from the date of receipt.

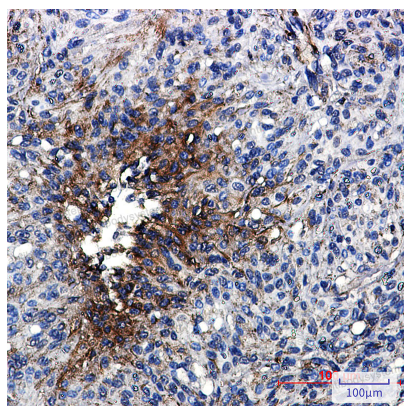
Note

For research use only.

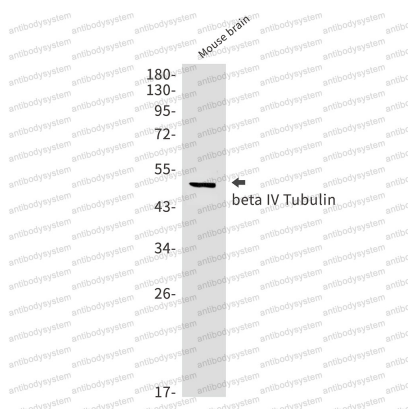
Data Image

**Immunofluorescence**

Immunocytochemistry analysis of beta IV Tubulin(green) in Hela using beta IV Tubulin antibody,and DAPI(blue)

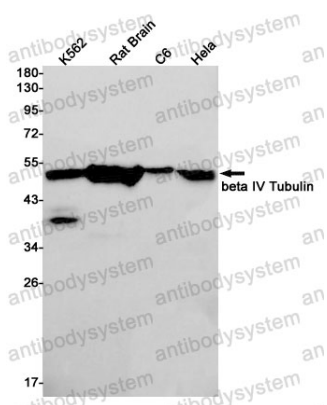
**Immunohistochemical**

Immunohistochemistry analysis of paraffin-embedded Human brain using beta IV Tubulin antibody.High-pressure and temperature Sodium Citrate pH 6.0 was used for antigen retrieval.



Western blot

Western blot analysis of beta IV Tubulin in mouse brain lysates using beta IV Tubulin antibody.



Western blot

Western blot analysis of beta IV Tubulin in K562, rat Brain, C6, Hela lysates using beta IV Tubulin antibody.