

Anti-ANXA1/Annexin A1 Antibody (R1J48)

Summary

Catalog No.	RHC06202
Clone ID	R1J48
Host species	Rabbit
Tested applications	IF: 1:50-1:200, IHC: 1:50-1:100, IP: 1:20, WB: 1:500-1:1000
Species reactivity	Human, Mouse, Rat
Form	Liquid
Storage buffer	0.01M PBS, pH 7.4, 0.05% BSA, 50% Glycerol, 0.05% Sodium azide.
Concentration	1 mg/ml
Purity	>95% by SDS-PAGE.
Clonality	Monoclonal
Isotype	IgG
Applications	IF, IHC, IP, WB
Target	LPC1, Calpactin-2, Lipocortin I, ANX1, ANXA1, Phospholipase A2 inhibitory protein, Chromobindin-9, Annexin I, Annexin A1, p35, Calpactin II, Annexin-1
Purification	Protein A/G purified from cell culture supernatant.
Endotoxin level	Please contact with the lab for this information.
Accession	P04083

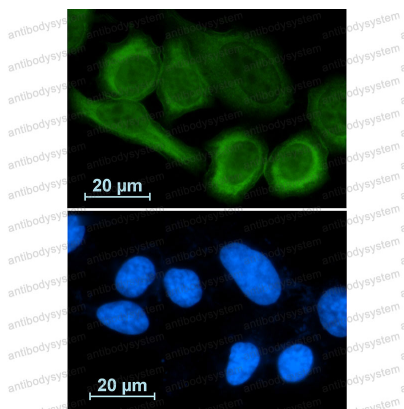
Stability and Storage

Use a manual defrost freezer and avoid repeated freeze thaw cycles. Store at 4 °C for frequent use. Store at -20 °C for twelve months from the date of receipt.

Note

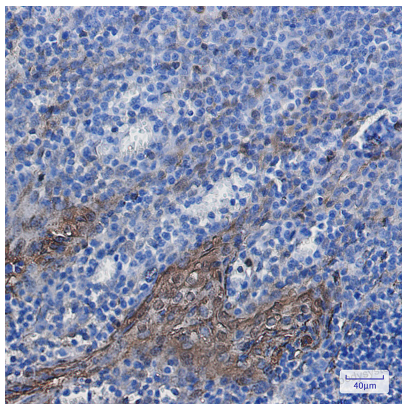
For research use only.

Data Image



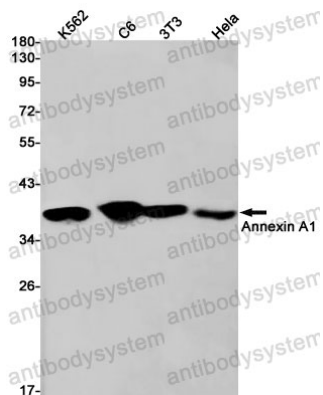
Immunofluorescence

Immunocytochemistry analysis of Annexin A1 (green) in A549 using Annexin A1 antibody, and DAPI(blue).



Immunohistochemical

Immunohistochemistry analysis of paraffin-embedded Human tonsil using Annexin A1 antibody. High-pressure and temperature Sodium Citrate pH 6.0 was used for antigen retrieval.



Western blot

Western blot analysis of Annexin A1 in K562, C6, 3T3, HeLa lysates using Annexin A1 antibody.