

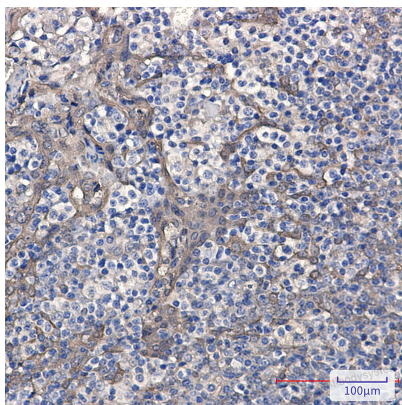
Anti-CSTB Antibody (R1J47)

Summary

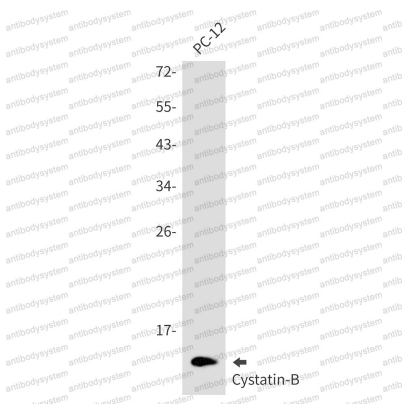
Catalog No.	RHC06101
Clone ID	R1J47
Host species	Rabbit
Tested applications	IHC: 1:50-1:100, WB: 1:500-1:1000
Species reactivity	Human, Rat
Form	Liquid
Storage buffer	0.01M PBS, pH 7.4, 0.05% BSA, 50% Glycerol, 0.05% Sodium azide.
Concentration	1 mg/ml
Purity	>95% by SDS-PAGE.
Clonality	Monoclonal
Isotype	IgG
Applications	IHC, WB
Target	Liver thiol proteinase inhibitor, CPI-B, CST6, CSTB, STFB, Cystatin-B, Stefin-B
Purification	Protein A/G purified from cell culture supernatant.
Endotoxin level	Please contact with the lab for this information.
Accession	P04080
Stability and Storage	Use a manual defrost freezer and avoid repeated freeze thaw cycles. Store at 4 °C for frequent use. Store at -20 °C for twelve months from the date of receipt.

Note

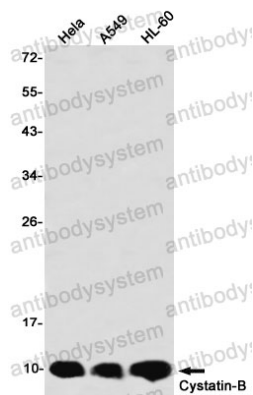
For research use only.

Data Image**Immunohistochemical**

Immunohistochemistry analysis of paraffin-embedded Human tonsil using CystatinB antibody. High-pressure and temperature Sodium Citrate pH 6.0 was used for antigen retrieval.

**Western blot**

Western blot analysis of CystatinB in PC-12 lysates using Cystatin B antibody.



Western blot

Western blot analysis of CystatinB in HeLa, A549, HL-60 lysates using CystatinB antibody.