

Anti-MT-ND1 Antibody (R1J30)

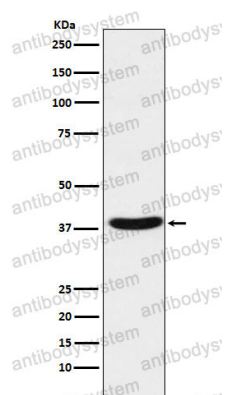
Summary

Catalog No.	RHC03301
Clone ID	R1J30
Host species	Rabbit
Tested applications	WB: 1:1000-1:5000
Species reactivity	Human, Mouse, Rat
Form	Liquid
Storage buffer	0.01M PBS, pH 7.4, 0.05% BSA, 50% Glycerol, 0.05% Sodium azide.
Concentration	1 mg/ml
Purity	>95% by SDS-PAGE.
Clonality	Monoclonal
Isotype	IgG
Applications	WB
Target	MT-ND1, NADH1, MTND1, NADH-ubiquinone oxidoreductase chain 1, ND1, NADH dehydrogenase subunit 1
Purification	Protein A/G purified from cell culture supernatant.
Endotoxin level	Please contact with the lab for this information.
Accession	P03886
Stability and Storage	Use a manual defrost freezer and avoid repeated freeze thaw cycles. Store at 4 °C for frequent use. Store at -20 °C for twelve months from the date of receipt.

Note

For research use only.

Data Image



Western blot

Western blot analysis of MT-ND1 expression in Human fetal muscle lysate.