

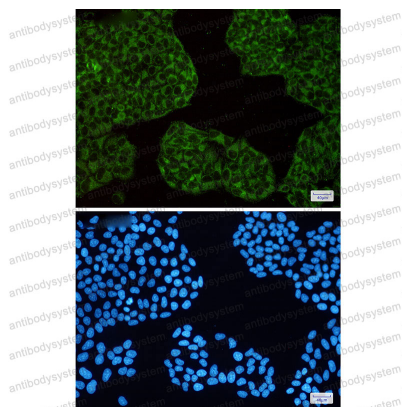
Anti-FTH1 Antibody (R1J27)

Summary

Catalog No.	RHC02501
Clone ID	R1J27
Host species	Rabbit
Tested applications	IF: 1:50-1:200, WB: 1:500-1:1000
Species reactivity	Human, Mouse, Rat, Hamster
Form	Liquid
Storage buffer	0.01M PBS, pH 7.4, 0.05% BSA, 50% Glycerol, 0.05% Sodium azide.
Concentration	1 mg/ml
Purity	>95% by SDS-PAGE.
Clonality	Monoclonal
Isotype	IgG
Applications	IF, WB
Target	FTH, FTH1, FTHL6, Ferritin H subunit, Cell proliferation-inducing gene 15 protein, Ferritin heavy chain
Purification	Protein A/G purified from cell culture supernatant.
Endotoxin level	Please contact with the lab for this information.
Accession	P02794
Stability and Storage	Use a manual defrost freezer and avoid repeated freeze thaw cycles. Store at 4 °C for frequent use. Store at -20 °C for twelve months from the date of receipt.

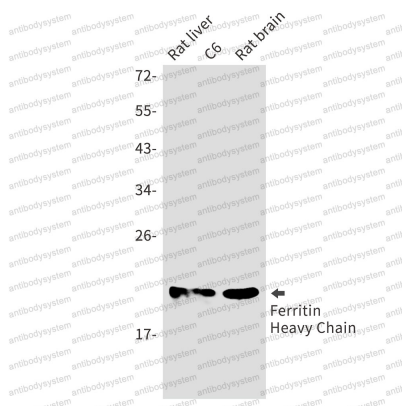
Note For research use only.

Data Image



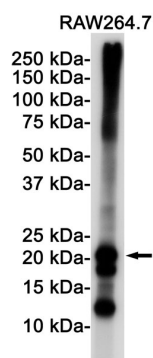
Immunofluorescence

Immunocytochemistry analysis of Ferritin(green) in Hela using Ferritin antibody, and DAPI(blue).



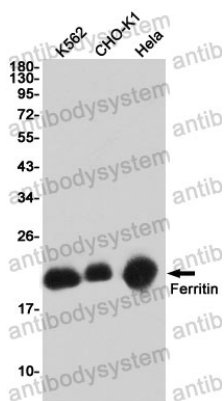
Western blot

Western blot analysis of Ferritin Heavy Chain in rat liver, C6, rat brain lysates using Ferritin Heavy Chain antibody.



Western blot analysis of Ferritin in Raw264.7 lysates using Ferritin antibody.

Western blot



Western blot analysis of Ferritin in K562, CHO-K1, HeLa lysates using Ferritin antibody

Western blot