

Anti-CXCL10/IP-10 Antibody (R1J19)

Summary

Catalog No.	RHC01901
Clone ID	R1J19
Host species	Rabbit
Tested applications	WB: 1:1000-1:2000
Species reactivity	Human
Form	Liquid
Storage buffer	0.01M PBS, pH 7.4, 0.05% BSA, 50% Glycerol, 0.05% Sodium azide.
Concentration	1 mg/ml
Purity	>95% by SDS-PAGE.
Clonality	Monoclonal
Isotype	IgG
Applications	WB
Target	Gamma-IP10, C-X-C motif chemokine 10, INP10, 10 kDa interferon gamma-induced protein, Small-inducible cytokine B10, SCYB10, IP-10, CXCL10
Purification	Protein A/G purified from cell culture supernatant.
Endotoxin level	Please contact with the lab for this information.
Accession	P02778

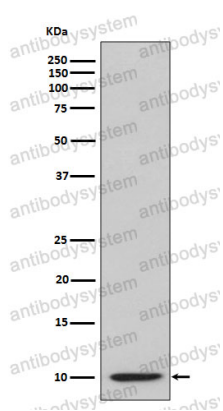
Stability and Storage

Use a manual defrost freezer and avoid repeated freeze thaw cycles. Store at 4 °C for frequent use. Store at -20 °C for twelve months from the date of receipt.

Note

For research use only.

Data Image



Western blot

Western blot analysis of IP10 expression in IP10 recombinant protein lysate.