

Anti-DBP/GC Antibody (R1J16)

Summary

Catalog No.	RHC01601
Clone ID	R1J16
Host species	Rabbit
Tested applications	IF: 1:50-1:200, WB: 1:500-1:1000
Species reactivity	Human, Mouse, Rat
Form	Liquid
Storage buffer	0.01M PBS, pH 7.4, 0.05% BSA, 50% Glycerol, 0.05% Sodium azide.
Concentration	1 mg/ml
Purity	>95% by SDS-PAGE.
Clonality	Monoclonal
Isotype	IgG
Applications	IF, WB
Target	Group-specific component, Vitamin D-binding protein-macrophage activating factor, GcMAF, DBP-maf, DBP, Vitamin D-binding protein, Gc protein-derived macrophage activating factor, Gc, Gc-globulin, GC, Gc-MAF, VDB
Purification	Protein A/G purified from cell culture supernatant.
Endotoxin level	Please contact with the lab for this information.
Accession	P02774

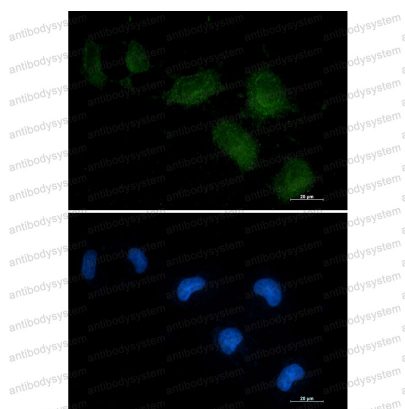
Recombinant Proteins & Antibodies

Stability and Storage

Use a manual defrost freezer and avoid repeated freeze thaw cycles. Store at 4 °C for frequent use. Store at -20 °C for twelve months from the date of receipt.

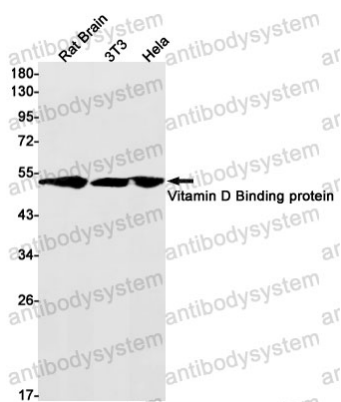
Note

For research use only.

Data Image

Immunofluorescence

Immunocytochemistry analysis of Vitamin D Binding Protein (green) in HEPG2 using Vitamin D Binding Protein antibody, and DAPI (blue).



Western blot

Western blot analysis of Vitamin D Binding protein in rat Brain, 3T3, Hela lysates using Vitamin D Binding protein antibody.