

# Anti-MBP Antibody (R1J02)

## Summary

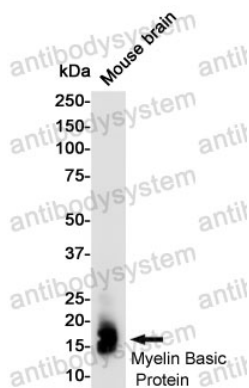
---

<b>Catalog No.</b>	RHB99401
<b>Clone ID</b>	R1J02
<b>Host species</b>	Rabbit
<b>Tested applications</b>	WB: 1:500-1:1000
<b>Species reactivity</b>	Mouse, Rat
<b>Form</b>	Liquid
<b>Storage buffer</b>	0.01M PBS, pH 7.4, 0.05% BSA, 50% Glycerol, 0.05% Sodium azide.
<b>Concentration</b>	1 mg/ml
<b>Purity</b>	>95% by SDS-PAGE.
<b>Clonality</b>	Monoclonal
<b>Isotype</b>	IgG
<b>Applications</b>	WB
<b>Target</b>	Myelin basic protein, Myelin membrane encephalitogenic protein, MBP, Myelin A1 protein
<b>Purification</b>	Protein A/G purified from cell culture supernatant.
<b>Endotoxin level</b>	Please contact with the lab for this information.
<b>Accession</b>	P02686
<b>Stability and Storage</b>	Use a manual defrost freezer and avoid repeated freeze thaw cycles. Store at 4 °C for frequent use. Store at -20 °C for twelve months from the date of receipt.

**Note**

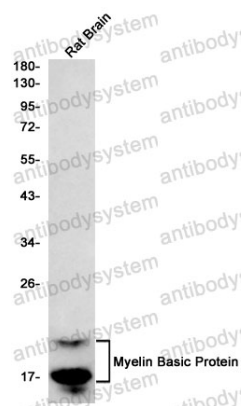
For research use only.

## Data Image



Western blot

Western blot analysis of Myelin Basic Protein in mouse Brain lysates using Myelin Basic Protein antibody.



Western blot

Western blot analysis of Myelin Basic Protein in rat Brain lysates using Myelin Basic Protein antibody.