

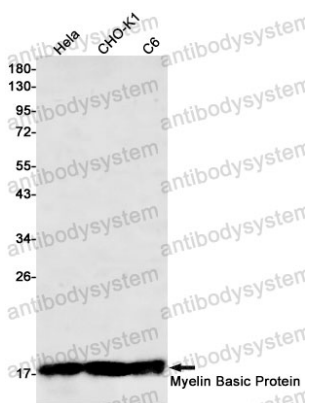
Anti-MBP Antibody (R1J01)

Summary

| | |
|------------------------------|---|
| Catalog No. | RHB99402 |
| Clone ID | R1J01 |
| Host species | Rabbit |
| Tested applications | WB: 1:500-1:1000 |
| Species reactivity | Human, Rat, Hamster |
| Form | Liquid |
| Storage buffer | 0.01M PBS, pH 7.4, 0.05% BSA, 50% Glycerol, 0.05% Sodium azide. |
| Concentration | 1 mg/ml |
| Purity | >95% by SDS-PAGE. |
| Clonality | Monoclonal |
| Isotype | IgG |
| Applications | WB |
| Target | Myelin basic protein, Myelin membrane encephalitogenic protein, MBP, Myelin A1 protein |
| Purification | Protein A/G purified from cell culture supernatant. |
| Endotoxin level | Please contact with the lab for this information. |
| Accession | P02686 |
| Stability and Storage | Use a manual defrost freezer and avoid repeated freeze thaw cycles. Store at 4 °C for frequent use. Store at -20 °C for twelve months from the date of receipt. |

Note

For research use only.

Data Image**Western blot**

Western blot analysis of Myelin Basic Protein in Hela, CHO-K1, C6 lysates using Myelin Basic Protein antibody.