

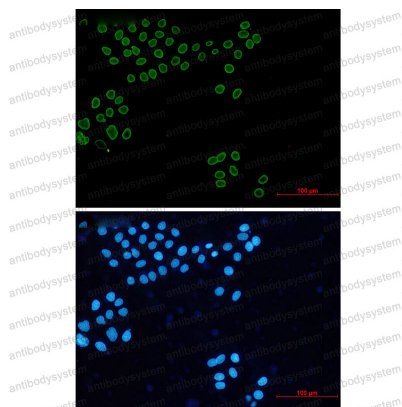
Anti-Lamin A/C Antibody (R1H92)

Summary

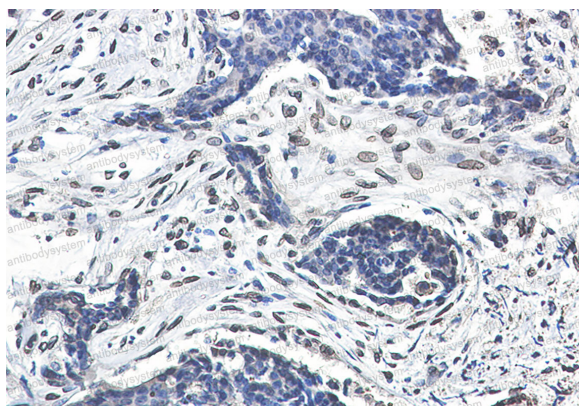
Catalog No.	RHB98202
Clone ID	R1H92
Host species	Rabbit
Tested applications	IF: 1:50-1:200, IHC: 1:50-1:100, WB: 1:500-1:1000
Species reactivity	Human, Mouse
Form	Liquid
Storage buffer	0.01M PBS, pH 7.4, 0.05% BSA, 50% Glycerol, 0.05% Sodium azide.
Concentration	1 mg/ml
Purity	>95% by SDS-PAGE.
Clonality	Monoclonal
Isotype	IgG
Applications	IF, IHC, WB
Target	70 kDa lamin, Prelamin-A/C, Renal carcinoma antigen NY-REN-32, LMNA, LMN1
Purification	Protein A/G purified from cell culture supernatant.
Endotoxin level	Please contact with the lab for this information.
Accession	P02545
Stability and Storage	Use a manual defrost freezer and avoid repeated freeze thaw cycles. Store at 4 °C for frequent use. Store at -20 °C for twelve months from the date of receipt.

Note

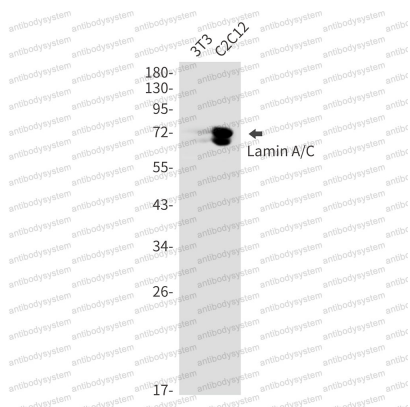
For research use only.

Data Image**Immunofluorescence**

Immunocytochemistry analysis of Lamin A/C (green) in HeLa using Lamin A/C antibody, and DAPI (blue).

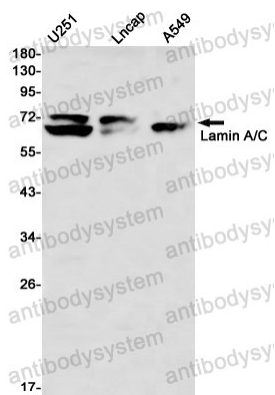
**Immunohistochemical**

Immunohistochemistry analysis of paraffin-embedded Human breast cancer using Lamin A/C antibody. High-pressure and temperature Sodium Citrate pH 6.0 was used for antigen retrieval.



Western blot

Western blot analysis of Lamin A/C in 3T3, C2C12 lysates using Lamin A/C antibody.



Western blot

Western blot analysis of Lamin A/C in U251, Lncap, A549 lysates using Lamin A/C antibody