

# Anti-KRT14 Antibody (R1H90)

## Summary

---

<b>Catalog No.</b>	RHB98001
<b>Clone ID</b>	R1H90
<b>Host species</b>	Rabbit
<b>Tested applications</b>	IF: 1:50-1:200, IHC: 1:100-1:200, WB: 1:1000-1:2000
<b>Species reactivity</b>	Human, Mouse, Rat
<b>Form</b>	Liquid
<b>Storage buffer</b>	0.01M PBS, pH 7.4, 0.05% BSA, 50% Glycerol, 0.05% Sodium azide.
<b>Concentration</b>	1 mg/ml
<b>Purity</b>	>95% by SDS-PAGE.
<b>Clonality</b>	Monoclonal
<b>Isotype</b>	IgG
<b>Applications</b>	IF, IHC, WB
<b>Target</b>	Keratin-14, K14, CK-14, Cytokeratin-14, KRT14, Keratin, type I cytoskeletal 14
<b>Purification</b>	Protein A/G purified from cell culture supernatant.
<b>Endotoxin level</b>	Please contact with the lab for this information.
<b>Accession</b>	P02533
<b>Stability and Storage</b>	Use a manual defrost freezer and avoid repeated freeze thaw cycles. Store at 4 °C for frequent use. Store at -20 °C for twelve months from the date of receipt.

**Note**

For research use only.

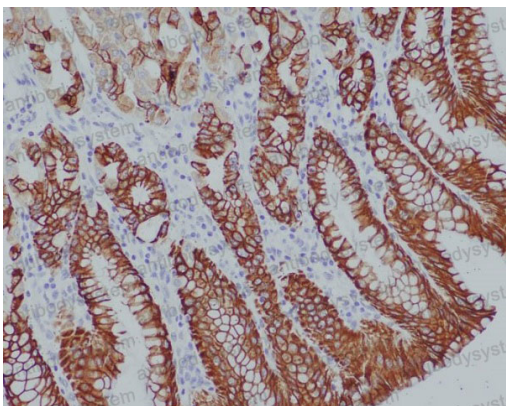
## Data Image

---



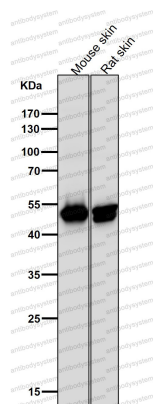
Immunofluorescence

Immunofluorescent analysis of HACAT cells, using Cytokeratin 14 Antibody.



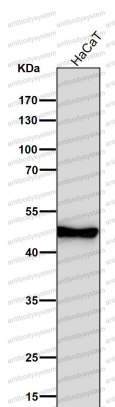
Immunohistochemical

Immunohistochemical analysis of paraffin-embedded human stomach, using Cytokeratin 14 Antibody.



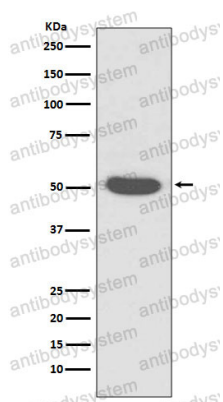
Western blot

All lanes use the Antibody at 1:2K dilution for 1 hour at room temperature.



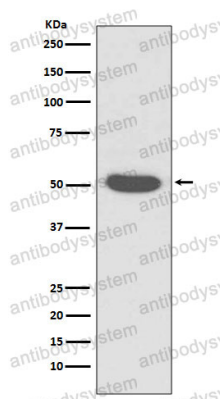
Western blot

All lanes use the Antibody at 1:2K dilution for 1 hour at room temperature.



Western blot

Western blot analysis of Cytokeratin 14 expression in A431 cell lysate.



Western blot

Western blot analysis of Cytokeratin 14 expression in A431 cell lysate.