

Anti-CRYAB Antibody (R1H88)

Summary

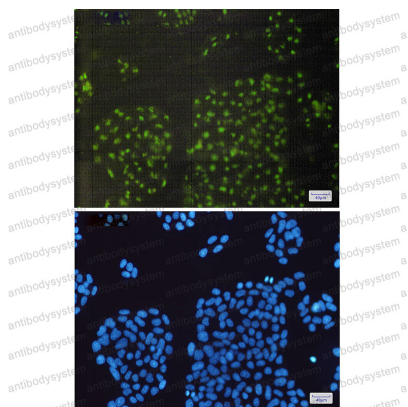
Catalog No.	RHB97901
Clone ID	R1H88
Host species	Rabbit
Tested applications	IF: 1:50-1:200, IP: 1:20, WB: 1:500-1:1000
Species reactivity	Human, Rat
Form	Liquid
Storage buffer	0.01M PBS, pH 7.4, 0.05% BSA, 50% Glycerol, 0.05% Sodium azide.
Concentration	1 mg/ml
Purity	>95% by SDS-PAGE.
Clonality	Monoclonal
Isotype	IgG
Applications	IF, IP, WB
Target	Rosenthal fiber component, CRYA2, HspB5, Alpha-crystallin B chain, HSPB5, Heat shock protein beta-5, Alpha(B)-crystallin, CRYAB, Renal carcinoma antigen NY-REN-27
Purification	Protein A/G purified from cell culture supernatant.
Endotoxin level	Please contact with the lab for this information.
Accession	P02511

Stability and Storage

Use a manual defrost freezer and avoid repeated freeze thaw cycles. Store at 4 °C for frequent use. Store at -20 °C for twelve months from the date of receipt.

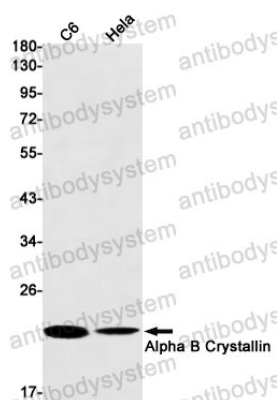
Note

For research use only.

Data Image

Immunofluorescence

Immunocytochemistry analysis of Alpha B Crystallin(green) in HeLa using Alpha B Crystallin antibody, and DAPI(blue)



Western blot

Western blot analysis of Alpha B Crystallin in C6, HeLa lysates using alpha B Crystallin antibody.