

Anti-TIMP1 Antibody (R1H60)

Summary

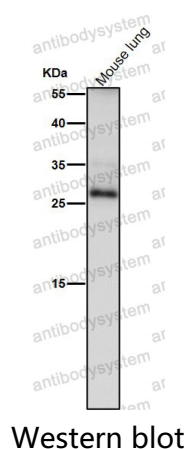
Catalog No.	RHB90102
Clone ID	R1H60
Host species	Rabbit
Tested applications	IHC: 1:100-1:200, WB: 1:1000-1:2000
Species reactivity	Human
Form	Liquid
Storage buffer	0.01M PBS, pH 7.4, 0.05% BSA, 50% Glycerol, 0.05% Sodium azide.
Concentration	1 mg/ml
Purity	>95% by SDS-PAGE.
Clonality	Monoclonal
Isotype	IgG
Applications	IHC, WB
Target	Erythroid-potentiating activity, TIMP, EPA, TIMP1, Metalloproteinase inhibitor 1, TIMP-1, Fibroblast collagenase inhibitor, Collagenase inhibitor, CLGI, Tissue inhibitor of metalloproteinases 1
Purification	Protein A/G purified from cell culture supernatant.
Endotoxin level	Please contact with the lab for this information.
Accession	P01033

Stability and Storage

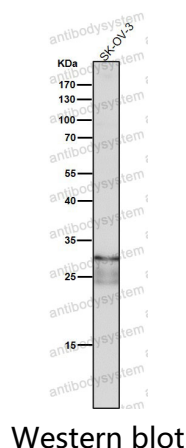
Use a manual defrost freezer and avoid repeated freeze thaw cycles. Store at 4 °C for frequent use. Store at -20 °C for twelve months from the date of receipt.

Note

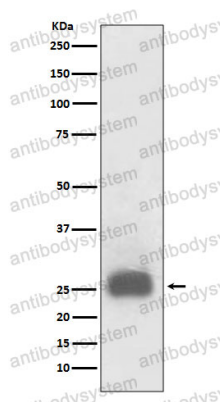
For research use only.

Data Image

All lanes use the Antibody at 1:1K dilution for 1 hour at room temperature.



All lanes use the Antibody at 1:1K dilution for 1 hour at room temperature.



Western blot

Western blot analysis of TIMP1 expression in HL60 cell lysate treated with TPA.