

# Anti-C3/Complement C3 Antibody (R1H59)

## Summary

---

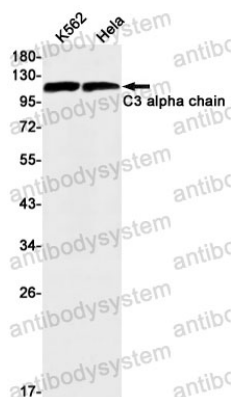
<b>Catalog No.</b>	RHB89904
<b>Clone ID</b>	R1H59
<b>Host species</b>	Rabbit
<b>Tested applications</b>	WB: 1:500-1:1000
<b>Species reactivity</b>	Human
<b>Form</b>	Liquid
<b>Storage buffer</b>	0.01M PBS, pH 7.4, 0.05% BSA, 50% Glycerol, 0.05% Sodium azide.
<b>Concentration</b>	1 mg/ml
<b>Purity</b>	>95% by SDS-PAGE.
<b>Clonality</b>	Monoclonal
<b>Isotype</b>	IgG
<b>Applications</b>	WB
<b>Target</b>	C3, ASP, Complement C3, C3adesArg, C3bc, CPAMD1, C3 and PZP-like alpha-2-macroglobulin domain-containing protein 1
<b>Purification</b>	Protein A/G purified from cell culture supernatant.
<b>Endotoxin level</b>	Please contact with the lab for this information.
<b>Accession</b>	P01024
<b>Stability and Storage</b>	Use a manual defrost freezer and avoid repeated freeze thaw cycles. Store at 4 °C for frequent use. Store at -20 °C for twelve months from the date of receipt.

Note

For research use only.

## Data Image

---



Western blot

Western blot analysis of C3 in K562, HeLa lysates using C3 antibody.