

Anti-C3/Complement C3 Antibody (R1H58)

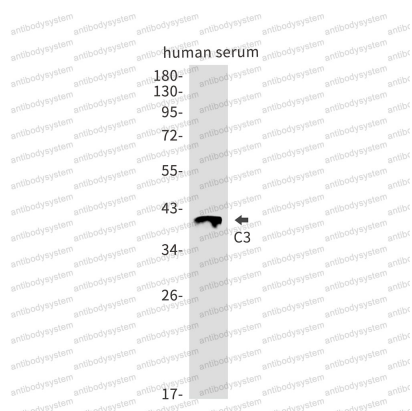
Summary

Catalog No.	RHB89905
Clone ID	R1H58
Host species	Rabbit
Tested applications	IHC: 1:50-1:100, WB: 1:500-1:1000
Species reactivity	Human
Form	Liquid
Storage buffer	0.01M PBS, pH 7.4, 0.05% BSA, 50% Glycerol, 0.05% Sodium azide.
Concentration	1 mg/ml
Purity	>95% by SDS-PAGE.
Clonality	Monoclonal
Isotype	IgG
Applications	IHC, WB
Target	C3, ASP, Complement C3, C3adesArg, C3bc, CPAMD1, C3 and PZP-like alpha-2-macroglobulin domain-containing protein 1
Purification	Protein A/G purified from cell culture supernatant.
Endotoxin level	Please contact with the lab for this information.
Accession	P01024
Stability and Storage	Use a manual defrost freezer and avoid repeated freeze thaw cycles. Store at 4 °C for frequent use. Store at -20 °C for twelve months from the date of receipt.

Note

For research use only.

Data Image



Western blot

Western blot analysis of C3 in Human serum lysates using C3 antibody.