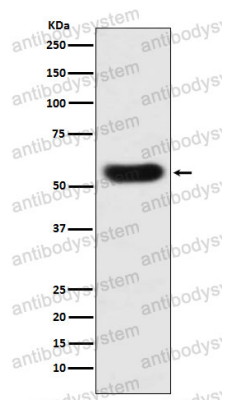


Anti-SERPINC1 Antibody (R1H51)

Summary

| | |
|------------------------------|---|
| Catalog No. | RHB89401 |
| Clone ID | R1H51 |
| Host species | Rabbit |
| Tested applications | IF: 1:50-1:200, WB: 1:1000-1:2000 |
| Species reactivity | Human |
| Form | Liquid |
| Storage buffer | 0.01M PBS, pH 7.4, 0.05% BSA, 50% Glycerol, 0.05% Sodium azide. |
| Concentration | 1 mg/ml |
| Purity | >95% by SDS-PAGE. |
| Clonality | Monoclonal |
| Isotype | IgG |
| Applications | IF, WB |
| Target | Serpin C1, ATIII, AT3, SERPINC1, Antithrombin-III |
| Purification | Protein A/G purified from cell culture supernatant. |
| Endotoxin level | Please contact with the lab for this information. |
| Accession | P01008 |
| Stability and Storage | Use a manual defrost freezer and avoid repeated freeze thaw cycles. Store at 4 °C for frequent use. Store at -20 °C for twelve months from the date of receipt. |
| Note | For research use only. |

Data Image



Western blot

Western blot analysis of SERPINC1 expression in human plasma lysate.