

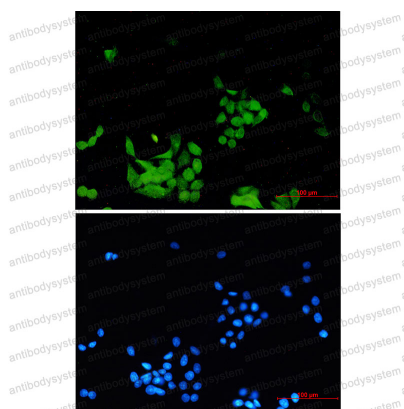
Anti-Phospho-EGFR/ERBB1/HER1 Antibody (R1H31)

Summary

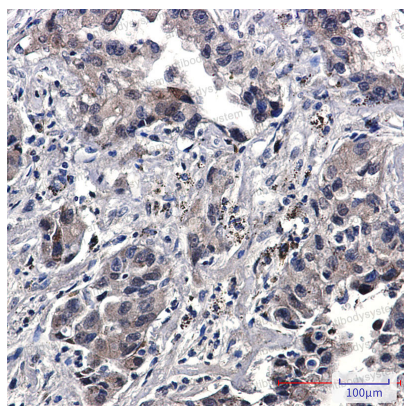
Catalog No.	RHB86912
Clone ID	R1H31
Host species	Rabbit
Tested applications	IF: 1:50-1:200, IHC: 1:50-1:100, IP: 1:20, WB: 1:500-1:1000
Species reactivity	Human
Form	Liquid
Storage buffer	0.01M PBS, pH 7.4, 0.05% BSA, 50% Glycerol, 0.05% Sodium azide.
Concentration	1 mg/ml
Purity	>95% by SDS-PAGE.
Clonality	Monoclonal
Isotype	IgG
Applications	IF, IHC, IP, WB
Target	HER1, Receptor tyrosine-protein kinase erbB-1, Proto-oncogene c-ErbB-1, Epidermal growth factor receptor, EGFR, ERBB1, ERBB
Purification	Protein A/G purified from cell culture supernatant.
Endotoxin level	Please contact with the lab for this information.
Accession	P00533
Stability and Storage	Use a manual defrost freezer and avoid repeated freeze thaw cycles. Store at 4 °C for frequent use. Store at -20 °C for twelve months from the date of receipt.

Note

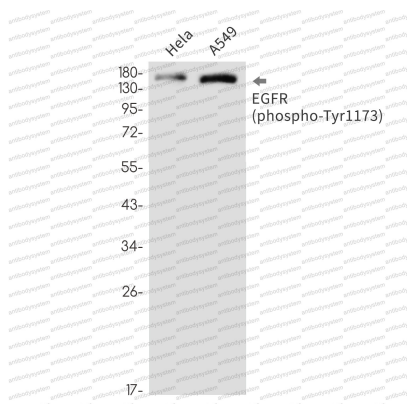
For research use only.

Data Image**Immunofluorescence**

Immunocytochemistry analysis of Phospho-EGFR (Tyr1173) (green) in Hela using Phospho-EGFR (Tyr1173) antibody, and DAPI (blue)

**Immunohistochemical**

Immunohistochemistry analysis of paraffin-embedded Human lung cancer using EGFR (Phospho-Tyr1173) antibody. High-pressure and temperature Sodium Citrate pH 6.0 was used for antigen retrieval.



Western blot

Western blot analysis of Phospho-EGFR (Tyr1173) in HeLa, A549 lysates using Phospho-EGFR (Tyr1173) antibody.