

Anti-MT-CO2 Antibody (R1H17)

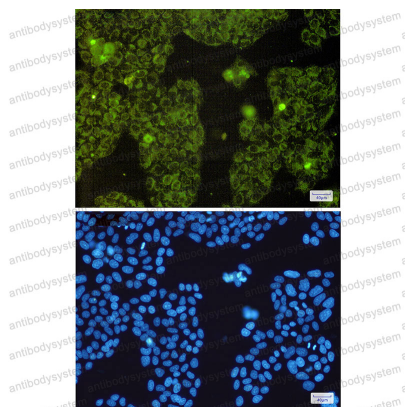
Summary

Catalog No.	RHB85701
Clone ID	R1H17
Host species	Rabbit
Tested applications	IF: 1:50-1:200, IHC: 1:50-1:100, IP: 1:20, WB: 1:500-1:1000
Species reactivity	Human
Form	Liquid
Storage buffer	0.01M PBS, pH 7.4, 0.05% BSA, 50% Glycerol, 0.05% Sodium azide.
Concentration	1 mg/ml
Purity	>95% by SDS-PAGE.
Clonality	Monoclonal
Isotype	IgG
Applications	IF, IHC, IP, WB
Target	COXII, COII, COX2, Cytochrome c oxidase polypeptide II, Cytochrome c oxidase subunit 2, MT-CO2, MTCO2
Purification	Protein A/G purified from cell culture supernatant.
Endotoxin level	Please contact with the lab for this information.
Accession	P00403
Stability and Storage	Use a manual defrost freezer and avoid repeated freeze thaw cycles. Store at 4 °C for frequent use. Store at -20 °C for twelve months from the date of receipt.

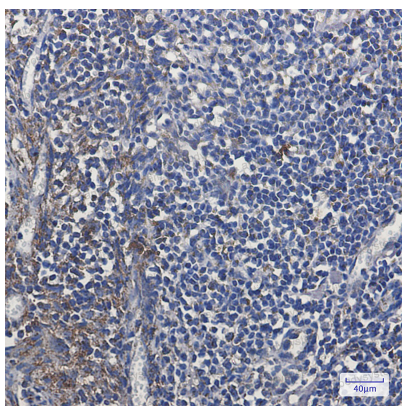
Note

For research use only.

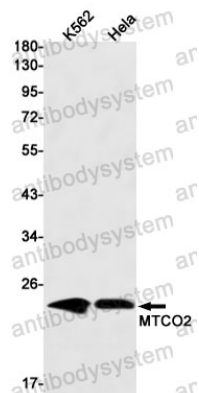
Data Image

**Immunofluorescence**

Immunocytochemistry analysis of MTCO2(green) in Hela using MTCO2 antibody, and DAPI(blue)

**Immunohistochemical**

Immunohistochemistry analysis of paraffin-embedded Human tonsil using MTCO2 antibody. High-pressure and temperature Sodium Citrate pH 6.0 was used for antigen retrieval.



Western blot

Western blot analysis of MTCO2 in K562, HeLa lysates using MTCO2 antibody.