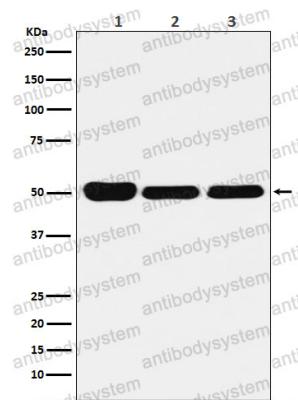


Anti-GSR Antibody (R1H13)

Summary

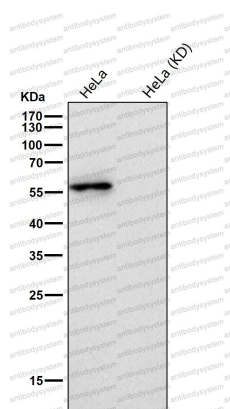
Catalog No.	RHB85502
Clone ID	R1H13
Host species	Rabbit
Tested applications	FCM: 1:20-1:100, WB: 1:1000-1:2000
Species reactivity	Human, Mouse, Rat
Form	Liquid
Storage buffer	0.01M PBS, pH 7.4, 0.05% BSA, 50% Glycerol, 0.05% Sodium azide.
Concentration	1 mg/ml
Purity	>95% by SDS-PAGE.
Clonality	Monoclonal
Isotype	IgG
Applications	FCM, WB
Target	GR, GRD1, GSR, GLUR, Glutathione reductase, mitochondrial, GRase
Purification	Protein A/G purified from cell culture supernatant.
Endotoxin level	Please contact with the lab for this information.
Accession	P00390
Stability and Storage	Use a manual defrost freezer and avoid repeated freeze thaw cycles. Store at 4 °C for frequent use. Store at -20 °C for twelve months from the date of receipt.
Note	For research use only.

Data Image



Western blot

Western blot analysis of GLUR expression in (1) HeLa cell lysate; (2) Mouse brain lysate; (3) Rat kidney lysate.



Western blot

All lanes use the Antibody at 1:1K dilution for 1 hour at room temperature.