

Anti-ALDH1A1 Antibody (R1H08)

Summary

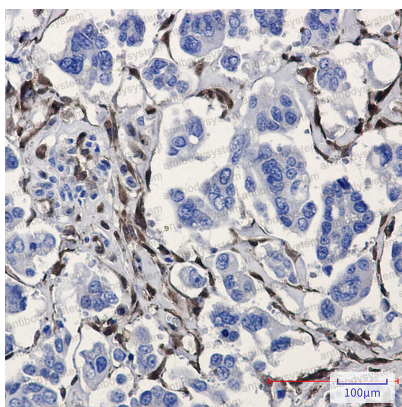
Catalog No.	RHB85101
Clone ID	R1H08
Host species	Rabbit
Tested applications	IHC: 1:50-1:100, IP: 1:20, WB: 1:500-1:1000
Species reactivity	Human, Mouse
Form	Liquid
Storage buffer	0.01M PBS, pH 7.4, 0.05% BSA, 50% Glycerol, 0.05% Sodium azide.
Concentration	1 mg/ml
Purity	>95% by SDS-PAGE.
Clonality	Monoclonal
Isotype	IgG
Applications	IHC, IP, WB
Target	Aldehyde dehydrogenase, cytosolic, Retinal dehydrogenase 1, ALDH-E1, RALDH1, Aldehyde dehydrogenase family 1 member A1, ALDH1A1, ALDH1, RALDH 1, ALDC, ALHDII, PUMB1
Purification	Protein A/G purified from cell culture supernatant.
Endotoxin level	Please contact with the lab for this information.
Accession	P00352

Stability and Storage

Use a manual defrost freezer and avoid repeated freeze thaw cycles. Store at 4 °C for frequent use. Store at -20 °C for twelve months from the date of receipt.

Note

For research use only.

Data Image

Immunohistochemical

Immunohistochemistry analysis of paraffin-embedded Human Cholangiocarcinoma using ALDH1A1 antibody. High-pressure and temperature Sodium Citrate pH 6.0 was used for antigen retrieval.



Western blot

Western blot analysis of ALDH1A1 in K562, 3T3 lysates using ALDH1A1 antibody.