

Anti-LDHA Antibody (R1H07)

Summary

Catalog No.	RHB85004
Clone ID	R1H07
Host species	Rabbit
Tested applications	IF: 1:50-1:200, IHC: 1:50-1:100, IP: 1:20, WB: 1:500-1:1000
Species reactivity	Human, Mouse, Rat
Form	Liquid
Storage buffer	0.01M PBS, pH 7.4, 0.05% BSA, 50% Glycerol, 0.05% Sodium azide.
Concentration	1 mg/ml
Purity	>95% by SDS-PAGE.
Clonality	Monoclonal
Isotype	IgG
Applications	IF, IHC, IP, WB
Target	Renal carcinoma antigen NY-REN-59, LDH-A, LDH muscle subunit, LDH-M, Cell proliferation-inducing gene 19 protein, L-lactate dehydrogenase A chain, LDHA
Purification	Protein A/G purified from cell culture supernatant.
Endotoxin level	Please contact with the lab for this information.
Accession	P00338

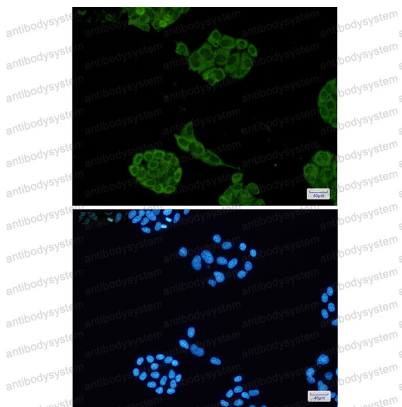
Stability and Storage

Use a manual defrost freezer and avoid repeated freeze thaw cycles. Store at 4 °C for frequent use. Store at -20 °C for twelve months from the date of receipt.

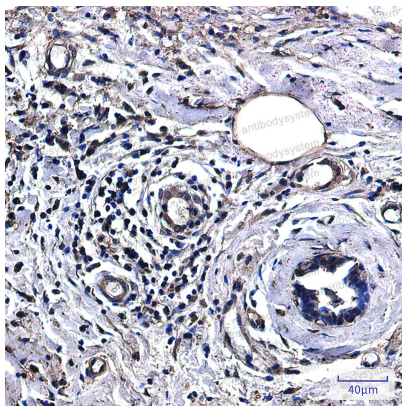
Note

For research use only.

Data Image



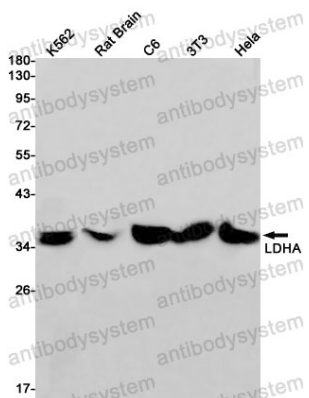
Immunofluorescence



Immunohistochemical

Immunocytochemistry analysis of Lactate Dehydrogenase(green) in Hela using Lactate Dehydrogenase antibody,and DAPI(blue)

Immunohistochemistry analysis of paraffin-embedded Human breast cancer using Lactate Dehydrogenase antibody. High-pressure and temperature Sodium Citrate pH 6.0 was used for antigen retrieval.



Western blot

Western blot analysis of LDHA in K562, rat Brain, C6, 3T3, Hela lysates using Lactate Dehydrogenase A antibody.