

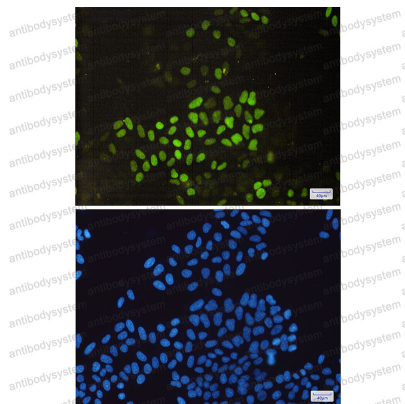
# Anti-CCNE2 Antibody (R1H04)

## Summary

---

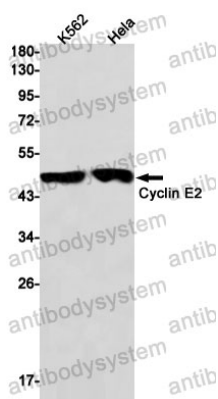
<b>Catalog No.</b>	RHB84104
<b>Clone ID</b>	R1H04
<b>Host species</b>	Rabbit
<b>Tested applications</b>	IF: 1:50-1:200, IP: 1:20, WB: 1:500-1:1000
<b>Species reactivity</b>	Human
<b>Form</b>	Liquid
<b>Storage buffer</b>	0.01M PBS, pH 7.4, 0.05% BSA, 50% Glycerol, 0.05% Sodium azide.
<b>Concentration</b>	1 mg/ml
<b>Purity</b>	>95% by SDS-PAGE.
<b>Clonality</b>	Monoclonal
<b>Isotype</b>	IgG
<b>Applications</b>	IF, IP, WB
<b>Target</b>	G1/S-specific cyclin-E2, CCNE2
<b>Purification</b>	Protein A/G purified from cell culture supernatant.
<b>Endotoxin level</b>	Please contact with the lab for this information.
<b>Accession</b>	O96020
<b>Stability and Storage</b>	Use a manual defrost freezer and avoid repeated freeze thaw cycles. Store at 4 °C for frequent use. Store at -20 °C for twelve months from the date of receipt.
<b>Note</b>	For research use only.

## Data Image



Immunofluorescence

Immunocytochemistry analysis of Cyclin E2(green) in HeLa using Cyclin E2 antibody, and DAPI(blue)



Western blot

Western blot analysis of Cyclin E2 in K562, HeLa lysates using Cyclin E2 antibody.