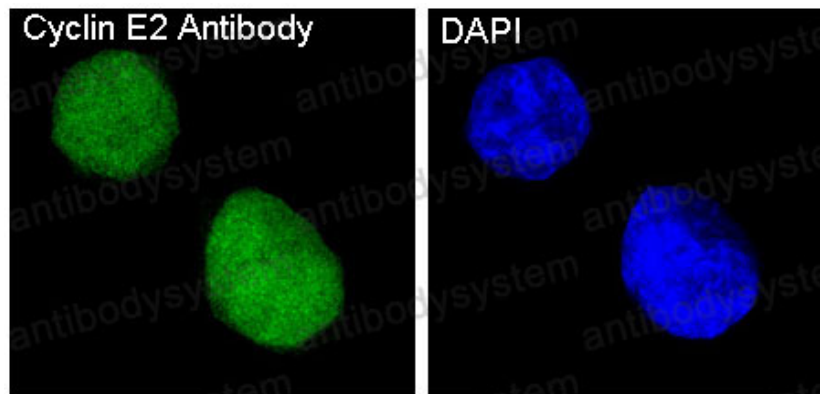


Anti-CCNE2 Antibody (R1H02)

Summary

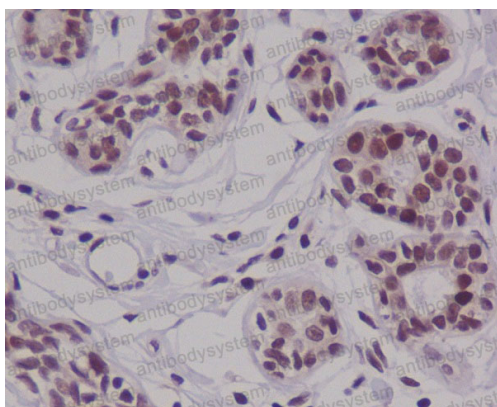
Catalog No.	RHB84102
Clone ID	R1H02
Host species	Rabbit
Tested applications	FCM: 1:20-1:100, IF: 1:50-1:200, IHC: 1:100-1:200, WB: 1:1000-1:2000
Species reactivity	Human, Mouse
Form	Liquid
Storage buffer	0.01M PBS, pH 7.4, 0.05% BSA, 50% Glycerol, 0.05% Sodium azide.
Concentration	1 mg/ml
Purity	>95% by SDS-PAGE.
Clonality	Monoclonal
Isotype	IgG
Applications	FCM, IF, IHC, WB
Target	G1/S-specific cyclin-E2, CCNE2
Purification	Protein A/G purified from cell culture supernatant.
Endotoxin level	Please contact with the lab for this information.
Accession	O96020
Stability and Storage	Use a manual defrost freezer and avoid repeated freeze thaw cycles. Store at 4 °C for frequent use. Store at -20 °C for twelve months from the date of receipt.
Note	For research use only.

Data Image



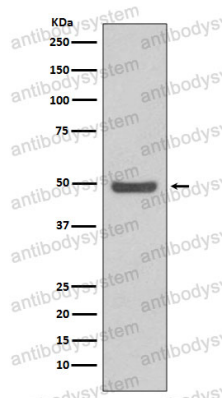
Immunofluorescent analysis of HeLa cells, using Cyclin E2 Antibody.

Immunofluorescence



Immunohistochemical analysis of paraffin-embedded human breast carcinoma, using Cyclin E2 Antibody.

Immunohistochemical



Western blot analysis of Cyclin E2 expression in HeLa cell lysate.

Western blot