

Anti-ACTL6A Antibody (R1H01)

Summary

Catalog No.	RHB84005
Clone ID	R1H01
Host species	Rabbit
Tested applications	IF: 1:50-1:200, IP: 1:20, WB: 1:500-1:1000
Species reactivity	Human
Form	Liquid
Storage buffer	0.01M PBS, pH 7.4, 0.05% BSA, 50% Glycerol, 0.05% Sodium azide.
Concentration	1 mg/ml
Purity	>95% by SDS-PAGE.
Clonality	Monoclonal
Isotype	IgG
Applications	IF, IP, WB
Target	BAF53, BAF53A, INO80K, BRG1-associated factor 53A, ArpNbeta, Actin-related protein Baf53a, INO80 complex subunit K, ACTL6A, Actin-like protein 6A, 53 kDa BRG1-associated factor A
Purification	Protein A/G purified from cell culture supernatant.
Endotoxin level	Please contact with the lab for this information.
Accession	O96019

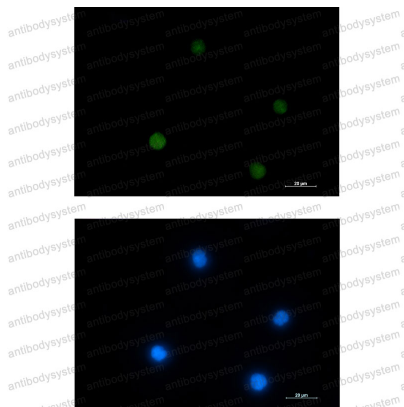
Recombinant Proteins & Antibodies

Stability and Storage

Use a manual defrost freezer and avoid repeated freeze thaw cycles. Store at 4 °C for frequent use. Store at -20 °C for twelve months from the date of receipt.

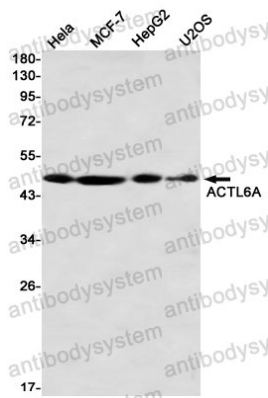
Note

For research use only.

Data Image

Immunofluorescence

Immunocytochemistry analysis of ACTL6A (green) in Jurkat using ACTL6A antibody, and DAPI(blue).



Western blot

Western blot analysis of ACTL6A in HeLa, MCF-7, HepG2, U2OS lysates using ACTL6A antibody.