

Anti-FTCD Antibody (R1G78)

Summary

Catalog No.	RHB80201
Clone ID	R1G78
Host species	Rabbit
Tested applications	FCM: 1:20-1:100, IHC: 1:100-1:200, WB: 1:1000-1:2000
Species reactivity	Human
Form	Liquid
Storage buffer	0.01M PBS, pH 7.4, 0.05% BSA, 50% Glycerol, 0.05% Sodium azide.
Concentration	1 mg/ml
Purity	>95% by SDS-PAGE.
Clonality	Monoclonal
Isotype	IgG
Applications	FCM, IHC, WB
Target	Formiminotetrahydrofolate cyclodeaminase, Glutamate formyltransferase, Glutamate formiminotransferase, FTCD, Formimidoyltransferase-cyclodeaminase, LCHC1, Formiminotransferase-cyclodeaminase
Purification	Protein A/G purified from cell culture supernatant.
Endotoxin level	Please contact with the lab for this information.
Accession	O95954

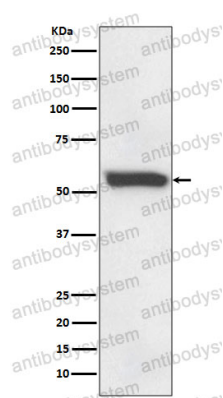
Stability and Storage

Use a manual defrost freezer and avoid repeated freeze thaw cycles. Store at 4 °C for frequent use. Store at -20 °C for twelve months from the date of receipt.

Note

For research use only.

Data Image



Western blot

Western blot analysis of 58K Golgi protein expression in human fetal liver lysate.