

Anti-AP2A1 Antibody (R1G64)

Summary

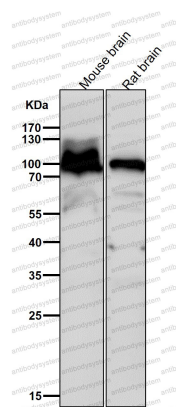
Catalog No.	RHB74401
Clone ID	R1G64
Host species	Rabbit
Tested applications	FCM: 1:20-1:100, IF: 1:50-1:200, IHC: 1:100-1:200, WB: 1:1000-1:2000
Species reactivity	Human, Mouse, Rat
Form	Liquid
Storage buffer	0.01M PBS, pH 7.4, 0.05% BSA, 50% Glycerol, 0.05% Sodium azide.
Concentration	1 mg/ml
Purity	>95% by SDS-PAGE.
Clonality	Monoclonal
Isotype	IgG
Applications	FCM, IF, IHC, WB
Target	AP-2 complex subunit alpha-1, Alpha1-adaptin, Adaptor protein complex AP-2 subunit alpha-1, 100 kDa coated vesicle protein A, Clathrin assembly protein complex 2 alpha-A large chain, ADTAA, CLAPA1, AP2A1, Adaptor-related protein complex 2 subunit alpha-1, Plasma membrane adaptor HA2/AP2 adaptin alpha A subunit, Alpha-adaptin A
Purification	Protein A/G purified from cell culture supernatant.
Endotoxin level	Please contact with the lab for this information.
Accession	O95782

Stability and Storage

Use a manual defrost freezer and avoid repeated freeze thaw cycles. Store at 4 °C for frequent use. Store at -20 °C for twelve months from the date of receipt.

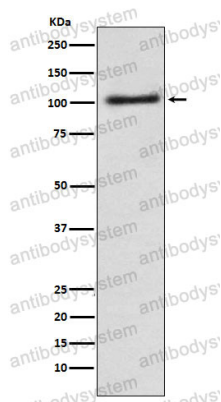
Note

For research use only.

Data Image

Western blot

All lanes use the Antibody at 1:2K dilution for 1 hour at room temperature.



Western blot

Western blot analysis of Alpha1-adaptin expression in A431 cell lysate.