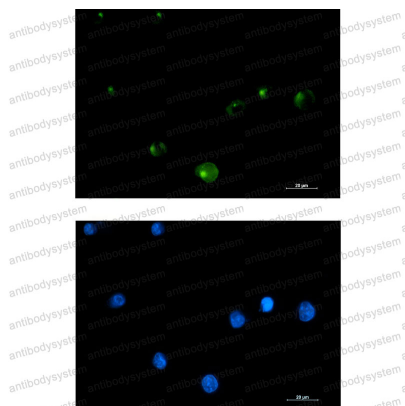


Anti-CEP43 Antibody (R1G60)

Summary

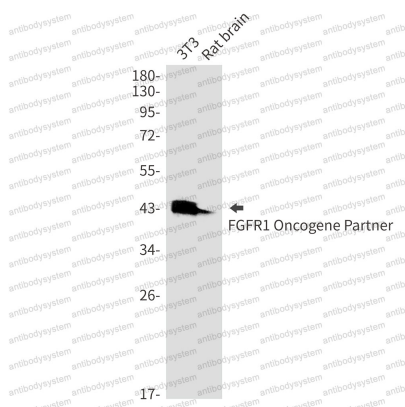
Catalog No.	RHB71701
Clone ID	R1G60
Host species	Rabbit
Tested applications	IF: 1:50-1:200, IP: 1:20, WB: 1:500-1:1000
Species reactivity	Human, Mouse, Rat
Form	Liquid
Storage buffer	0.01M PBS, pH 7.4, 0.05% BSA, 50% Glycerol, 0.05% Sodium azide.
Concentration	1 mg/ml
Purity	>95% by SDS-PAGE.
Clonality	Monoclonal
Isotype	IgG
Applications	IF, IP, WB
Target	Centrosomal protein 43, FOP, FGFR1 oncogene partner, CEP43, FGFR1OP
Purification	Protein A/G purified from cell culture supernatant.
Endotoxin level	Please contact with the lab for this information.
Accession	O95684
Stability and Storage	Use a manual defrost freezer and avoid repeated freeze thaw cycles. Store at 4 °C for frequent use. Store at -20 °C for twelve months from the date of receipt.
Note	For research use only.

Data Image



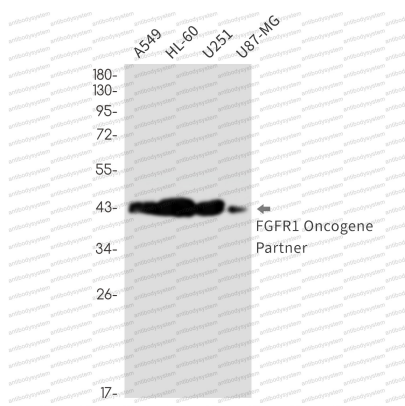
Immunofluorescence

Immunocytochemistry analysis of FGFR1 Oncogene Partner (green) in K562 using FGFR1 Oncogene Partner antibody, and DAPI (blue).



Western blot

Western blot analysis of FGFR1 Oncogene Partner in 3T3, rat brain lysates using FGFR1 Oncogene Partner antibody.



Western blot

Western blot analysis of FGFR1 Oncogene Partner in A549, HL-60, U251, U87-MG lysates using FGFR1 Oncogene Partner antibody