

# Anti-Phospho-NFATC1/NFAT2 (Ser237) Antibody (R1G58)

## Summary

---

<b>Catalog No.</b>	RHB70801
<b>Clone ID</b>	R1G58
<b>Host species</b>	Rabbit
<b>Tested applications</b>	WB: 1:500-1:1000
<b>Species reactivity</b>	Human, Mouse
<b>Form</b>	Liquid
<b>Storage buffer</b>	0.01M PBS, pH 7.4, 0.05% BSA, 50% Glycerol, 0.05% Sodium azide.
<b>Concentration</b>	1 mg/ml
<b>Purity</b>	>95% by SDS-PAGE.
<b>Clonality</b>	Monoclonal
<b>Isotype</b>	IgG
<b>Applications</b>	WB
<b>Target</b>	NFAT2, NFATc1, NF-ATc, NFATC1, NF-ATc1, NFATC, NFAT transcription complex cytosolic component, NFATc, Nuclear factor of activated T-cells, cytoplasmic 1
<b>Purification</b>	Protein A/G purified from cell culture supernatant.
<b>Endotoxin level</b>	Please contact with the lab for this information.
<b>Accession</b>	O95644

**Stability and Storage**

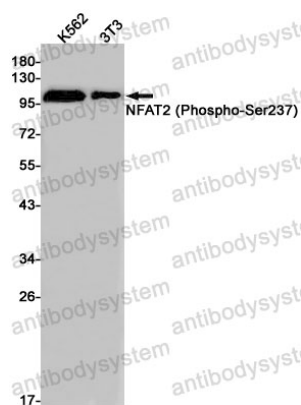
Use a manual defrost freezer and avoid repeated freeze thaw cycles. Store at 4 °C for frequent use. Store at -20 °C for twelve months from the date of receipt.

**Note**

For research use only.

## Data Image

---



Western blot

Western blot analysis of NFAT2 (Phospho-Ser237) in K562, 3T3 lysates using Phospho-NFAT2 (Ser237) antibody.