

Anti-NFATC1 Antibody (R1G57)

Summary

Catalog No.	RHB70802
Clone ID	R1G57
Host species	Rabbit
Tested applications	FCM: 1:20-1:100, IF: 1:50-1:200, WB: 1:1000-1:2000
Species reactivity	Human
Form	Liquid
Storage buffer	0.01M PBS, pH 7.4, 0.05% BSA, 50% Glycerol, 0.05% Sodium azide.
Concentration	1 mg/ml
Purity	>95% by SDS-PAGE.
Clonality	Monoclonal
Isotype	IgG
Applications	FCM, IF, WB
Target	NFAT2, NFATc1, NF-ATc, NFATC1, NF-ATc1, NFATC, NFAT transcription complex cytosolic component, NFATc, Nuclear factor of activated T-cells, cytoplasmic 1
Purification	Protein A/G purified from cell culture supernatant.
Endotoxin level	Please contact with the lab for this information.
Accession	O95644

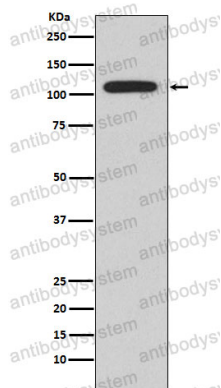
Stability and Storage

Use a manual defrost freezer and avoid repeated freeze thaw cycles. Store at 4 °C for frequent use. Store at -20 °C for twelve months from the date of receipt.

Note

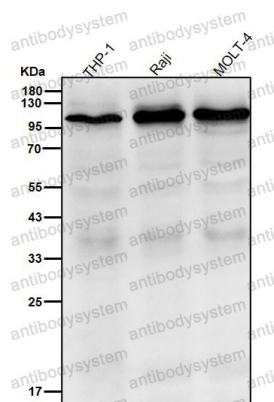
For research use only.

Data Image



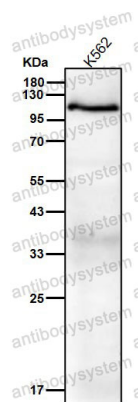
Western blot

Western blot analysis of NFAT2 expression in Ramos cell lysate.



Western blot

All lanes use the Antibody at 1:2K dilution for 1 hour at room temperature.



Western blot

All lanes use the Antibody at 1:2K dilution for 1 hour at room temperature.