

Anti-ZFYVE9 Antibody (R1G50)

Summary

Catalog No.	RHB64101
Clone ID	R1G50
Host species	Rabbit
Tested applications	IHC: 1:50-1:100, IP: 1:20, WB: 1:500-1:1000
Species reactivity	Human
Form	Liquid
Storage buffer	0.01M PBS, pH 7.4, 0.05% BSA, 50% Glycerol, 0.05% Sodium azide.
Concentration	1 mg/ml
Purity	>95% by SDS-PAGE.
Clonality	Monoclonal
Isotype	IgG
Applications	IHC, IP, WB
Target	ZFYVE9, hSARA, Smad anchor for receptor activation, SARA, SMADIP, Zinc finger FYVE domain-containing protein 9, Novel serine protease, Receptor activation anchor, NSP, MADHIP, Mothers against decapentaplegic homolog-interacting protein, Madh-interacting protein
Purification	Protein A/G purified from cell culture supernatant.
Endotoxin level	Please contact with the lab for this information.
Accession	O95405

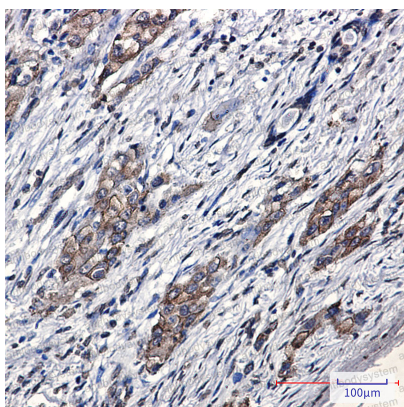
Stability and Storage

Use a manual defrost freezer and avoid repeated freeze thaw cycles. Store at 4 °C for frequent use. Store at -20 °C for twelve months from the date of receipt.

Note

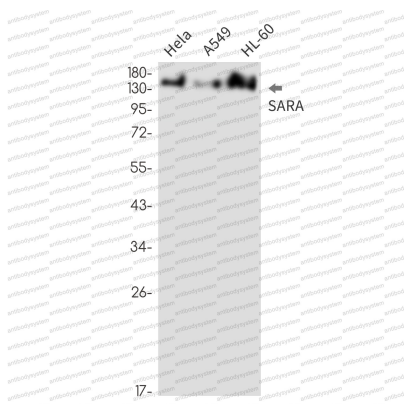
For research use only.

Data Image



Immunohistochemical

Immunohistochemistry analysis of paraffin-embedded Human lung cancer using SARA antibody. High-pressure and temperature Sodium Citrate pH 6.0 was used for antigen retrieval.



Western blot

Western blot analysis of SARA in HeLa, A549, HL-60 lysates using SARA antibody.