

# Anti-RAPGEF3 Antibody (R1G48)

## Summary

---

<b>Catalog No.</b>	RHB63701
<b>Clone ID</b>	R1G48
<b>Host species</b>	Rabbit
<b>Tested applications</b>	IP: 1:20, WB: 1:500-1:1000
<b>Species reactivity</b>	Human, Mouse
<b>Form</b>	Liquid
<b>Storage buffer</b>	0.01M PBS, pH 7.4, 0.05% BSA, 50% Glycerol, 0.05% Sodium azide.
<b>Concentration</b>	1 mg/ml
<b>Purity</b>	>95% by SDS-PAGE.
<b>Clonality</b>	Monoclonal
<b>Isotype</b>	IgG
<b>Applications</b>	IP, WB
<b>Target</b>	RAPGEF3, cAMP-GEFI, cAMP-regulated guanine nucleotide exchange factor I, EPAC1, EPAC 1, Exchange protein directly activated by cAMP 1, Rap guanine nucleotide exchange factor 3, Exchange factor directly activated by cAMP 1, Rap1 guanine-nucleotide-exchange factor directly activated by cAMP, EPAC, CGEF1
<b>Purification</b>	Protein A/G purified from cell culture supernatant.
<b>Endotoxin level</b>	Please contact with the lab for this information.
<b>Accession</b>	O95398

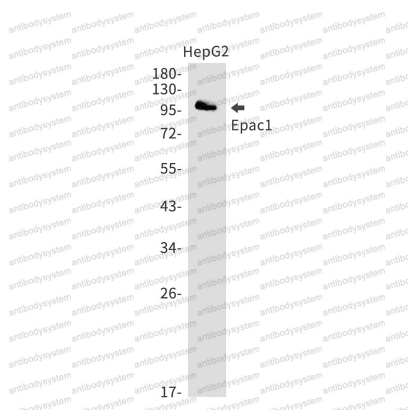
## Stability and Storage

Use a manual defrost freezer and avoid repeated freeze thaw cycles. Store at 4 °C for frequent use. Store at -20 °C for twelve months from the date of receipt.

## Note

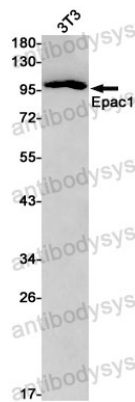
For research use only.

## Data Image



Western blot

Western blot analysis of Epac1 in HepG2 lysates using Epac1 antibody.



Western blot

Western blot analysis of Epac1 in 3T3 lysates using Epac1 antibody.