

Anti-RAPGEF3/EPAC 1 Antibody (R1G47)

Summary

Catalog No.	RHB63702
Clone ID	R1G47
Host species	Rabbit
Tested applications	IF: 1:50-1:200, IHC: 1:100-1:200, IP: 1:20-1:50, WB: 1:1000-1:2000
Species reactivity	Human, Mouse, Rat
Form	Liquid
Storage buffer	0.01M PBS, pH 7.4, 0.05% BSA, 50% Glycerol, 0.05% Sodium azide.
Concentration	1 mg/ml
Purity	>95% by SDS-PAGE.
Clonality	Monoclonal
Isotype	IgG
Applications	IF, IHC, IP, WB
Target	RAPGEF3, cAMP-GEFI, cAMP-regulated guanine nucleotide exchange factor I, EPAC1, EPAC 1, Exchange protein directly activated by cAMP 1, Rap guanine nucleotide exchange factor 3, Exchange factor directly activated by cAMP 1, Rap1 guanine-nucleotide-exchange factor directly activated by cAMP, EPAC, CGEF1
Purification	Protein A/G purified from cell culture supernatant.
Endotoxin level	Please contact with the lab for this information.
Accession	O95398

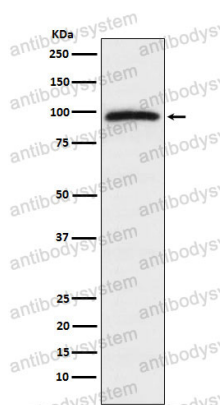
Stability and Storage

Use a manual defrost freezer and avoid repeated freeze thaw cycles. Store at 4 °C for frequent use. Store at -20 °C for twelve months from the date of receipt.

Note

For research use only.

Data Image



Western blot

Western blot analysis of Epac1 expression in HeLa cell lysate.