

Anti-ZBTB7A Antibody (R1G43)

Summary

Catalog No.	RHB62001
Clone ID	R1G43
Host species	Rabbit
Tested applications	IF: 1:50-1:200, IHC: 1:50-1:100, IP: 1:20, WB: 1:500-1:1000
Species reactivity	Human
Form	Liquid
Storage buffer	0.01M PBS, pH 7.4, 0.05% BSA, 50% Glycerol, 0.05% Sodium azide.
Concentration	1 mg/ml
Purity	>95% by SDS-PAGE.
Clonality	Monoclonal
Isotype	IgG
Applications	IF, IHC, IP, WB
Target	Leukemia/lymphoma-related factor, POK erythroid myeloid ontogenic factor, Pokemon, Pokemon 1, ZNF857A, ZBTB7, TTF-I-interacting peptide 21, LRF, ZBTB7A, POZ and Krueppel erythroid myeloid ontogenic factor, Factor binding IST protein 1, Factor that binds to inducer of short transcripts protein 1, Zinc finger and BTB domain-containing protein 7A, FBI1, Zinc finger protein 857A, HIV-1 1st-binding protein 1, FBI-1, TIP21
Purification	Protein A/G purified from cell culture supernatant.
Endotoxin level	Please contact with the lab for this information.
Accession	O95365

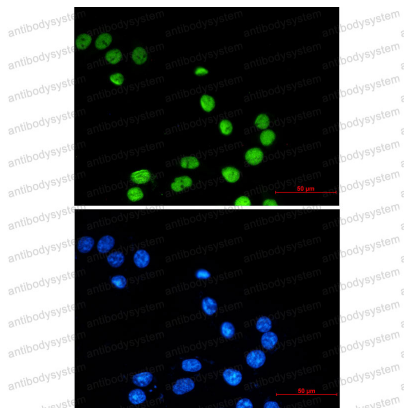
Stability and Storage

Use a manual defrost freezer and avoid repeated freeze thaw cycles. Store at 4 °C for frequent use. Store at -20 °C for twelve months from the date of receipt.

Note

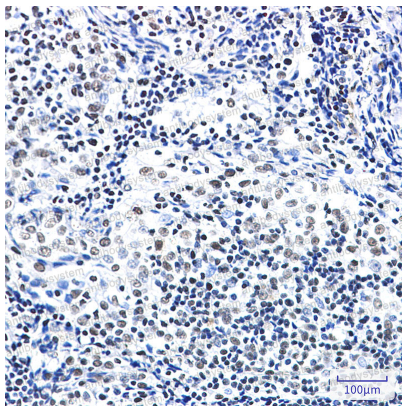
For research use only.

Data Image



Immunofluorescence

Immunocytochemistry analysis of ZBTB7A (green) in MCF-7 using ZBTB7A antibody, and DAPI(blue)



Immunohistochemical

Immunohistochemistry analysis of paraffin-embedded Human tonsil using ZBTB7A antibody. High-pressure and temperature Sodium Citrate pH 6.0 was used for antigen retrieval.



Western blot

Western blot analysis of ZBTB7A in HeLa, Ramos lysates using ZBTB7A antibody.