

Anti-CELF2 Antibody (R1G39)

Summary

Catalog No.	RHB61001
Clone ID	R1G39
Host species	Rabbit
Tested applications	IF: 1:50-1:200, IHC: 1:50-1:100, IP: 1:20, WB: 1:500-1:1000
Species reactivity	Human, Mouse, Rat
Form	Liquid
Storage buffer	0.01M PBS, pH 7.4, 0.05% BSA, 50% Glycerol, 0.05% Sodium azide.
Concentration	1 mg/ml
Purity	>95% by SDS-PAGE.
Clonality	Monoclonal
Isotype	IgG
Applications	IF, IHC, IP, WB
Target	CELF-2, hNAPOR, Neuroblastoma apoptosis-related RNA-binding protein, CUGBP Elav-like family member 2, CUG-BP- and ETR-3-like factor 2, BRUNOL3, NAPOR, ETR3, CUGBP2, CUG triplet repeat RNA-binding protein 2, ETR-3, CELF2, ELAV-type RNA-binding protein 3, RNA-binding protein BRUNOL-3, Bruno-like protein 3, CUG-BP2
Purification	Protein A/G purified from cell culture supernatant.
Endotoxin level	Please contact with the lab for this information.
Accession	O95319

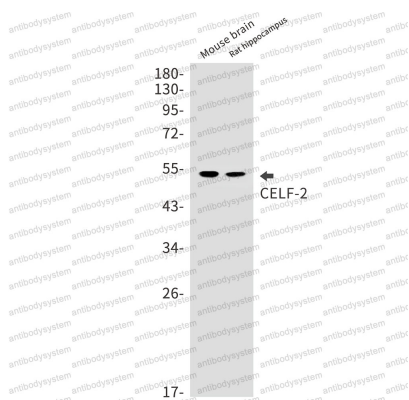
Stability and Storage

Use a manual defrost freezer and avoid repeated freeze thaw cycles. Store at 4 °C for frequent use. Store at -20 °C for twelve months from the date of receipt.

Note

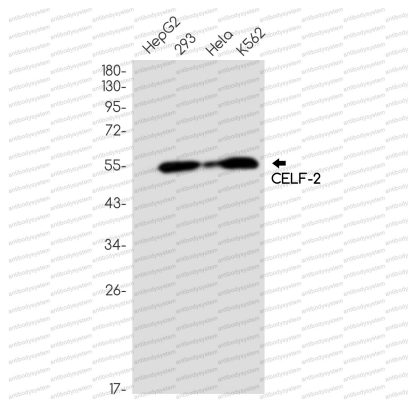
For research use only.

Data Image



Western blot

Western blot analysis of CELF2 in mouse brain, rat hippocampus lysates using CELF2 antibody.



Western blot

Western blot analysis of CELF2 in HepG2, 293, Hela, K562 lysates using CELF2 antibody.